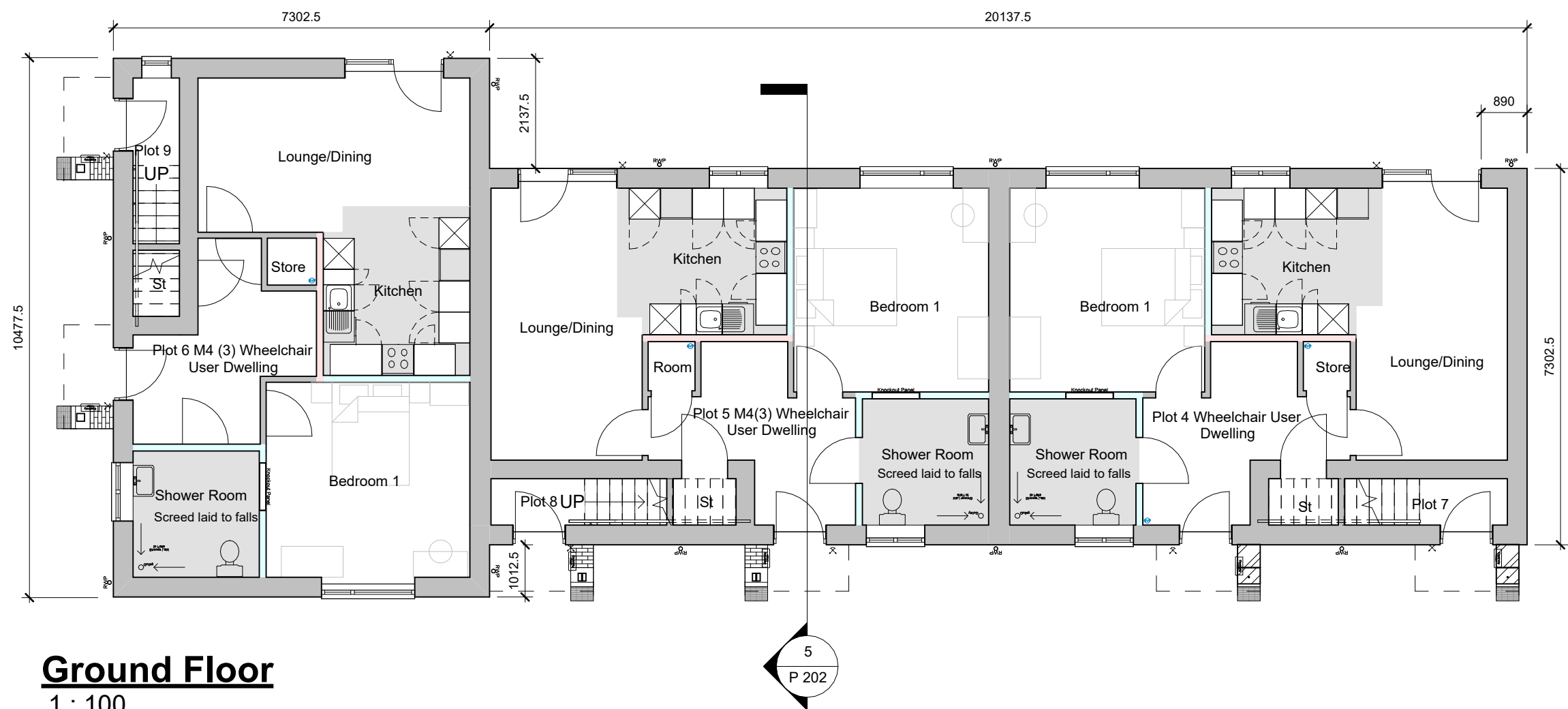


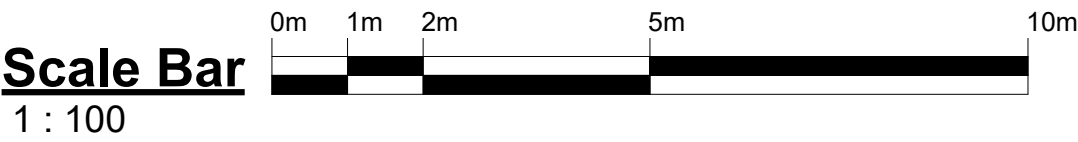
First Floor
1 : 100



Ground Floor
1 : 100

Floor Areas:

- Plot 4 Part M(3) = 59.5m²
- Plot 5 Part M(3) = 59.5m²
- Plot 6 Part M(3) = 59.5m²
- Plot 7 = 63.3m²
- Plot 8 = 63.3m²
- Plot 9 = 63.3m²



| Revision | Date | Description |
|---|-----------------------------|-------------|
| <div><div></div><div>Pelham</div><div>Clifton Place, 9 Fairham Brook Drive, Clifton, Nottingham, NG11 8PY T: 0115 773 6904 hello@pelham.co.uk www.pelham.co.uk</div></div> | | |
| STAGE | | Planning |
| PROJECT <div>Peggs Close</div> <div>Earl Shilton</div> | | |
| DRAWING TITLE <div>Plot 4 - 9 Floor Plans</div> | | |
| DRAWING NUMBER <div>2724/P 201</div> | | REVISION |
| SCALE <div>As indicated @ A2</div> | DATE <div>01.09.25</div> | |
| DRAWN BY <div>BS</div> | CHECKED BY <div>MP</div> | |
| Do not scale this drawing. All dimensions must be checked and verified on site. This drawing is copyright and must not be used for any purpose other than that for which it is issued, without the consent of Pelham. | | |