



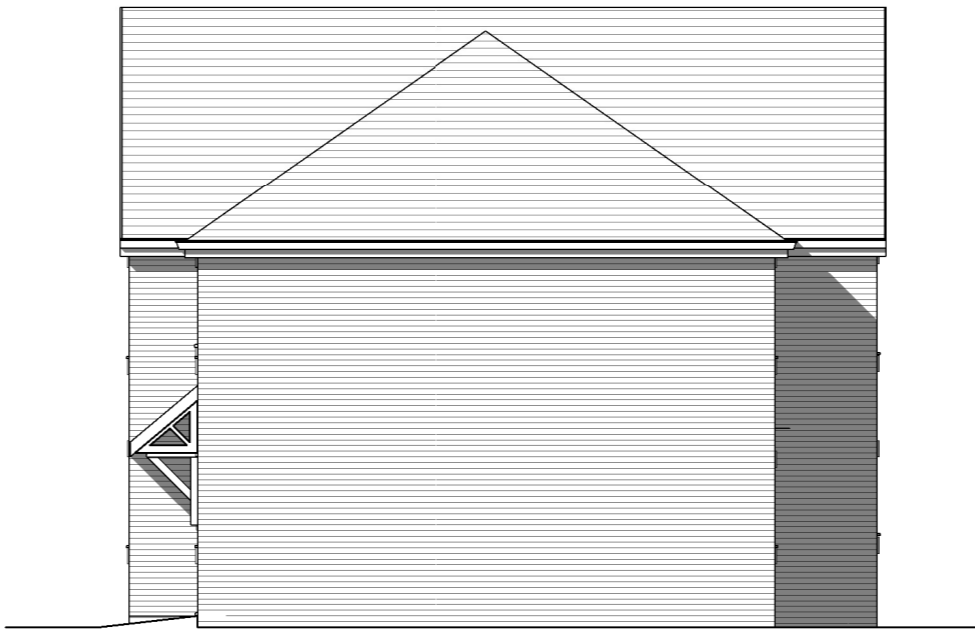
Front elevation



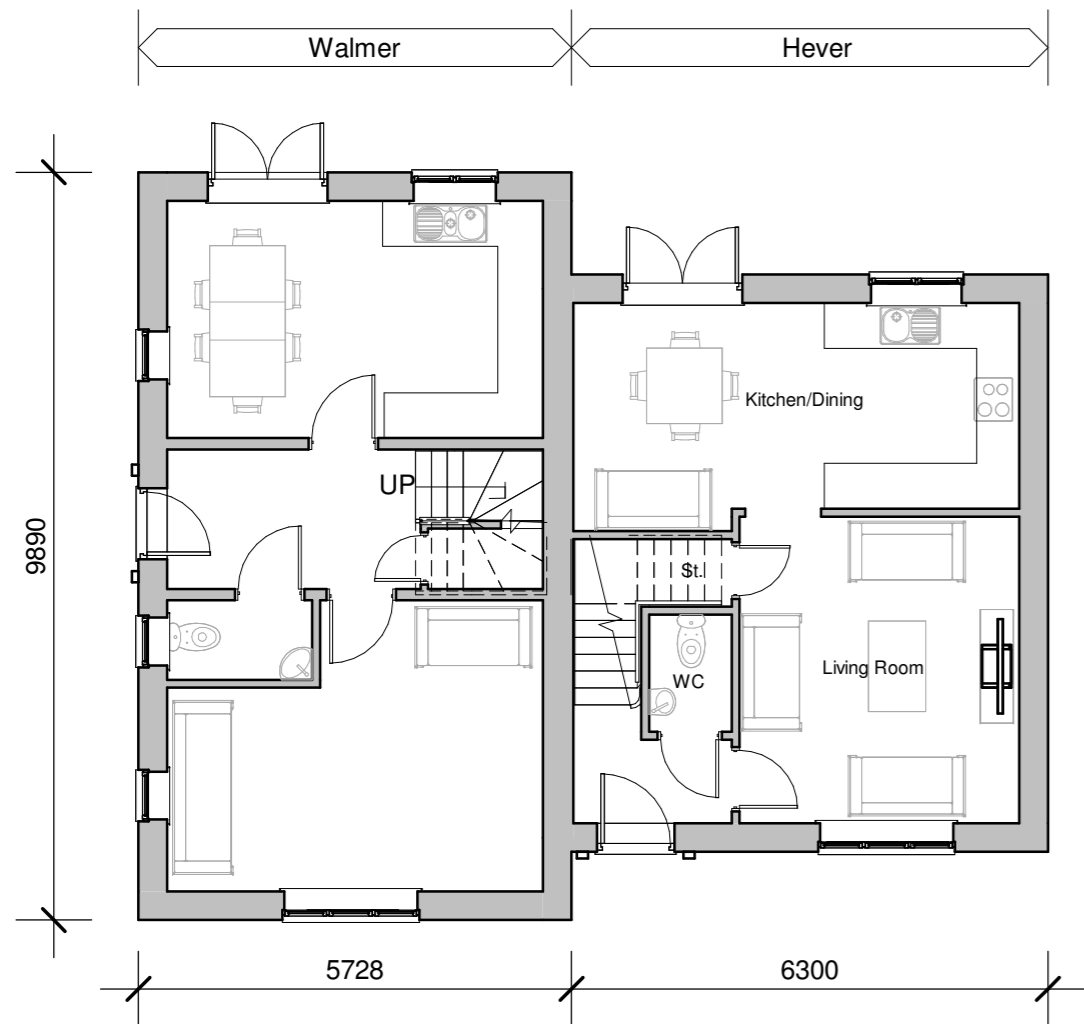
Side elevation



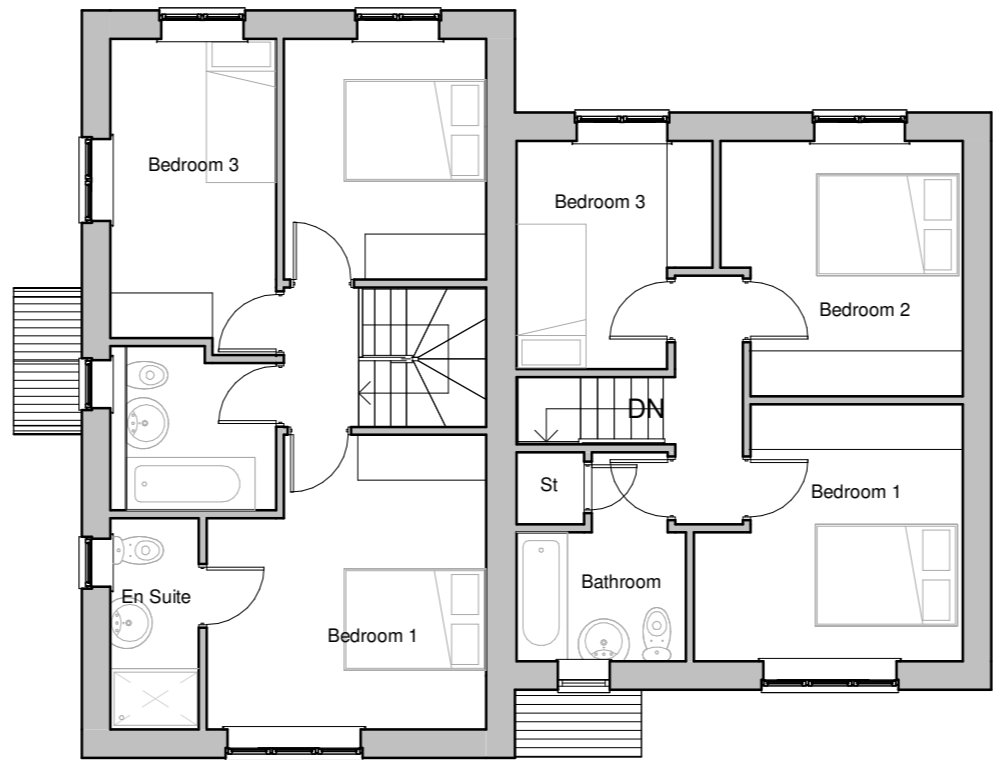
Rear elevation



Side elevation



Ground floor



First floor



**Walmer**  
Floor area - 91sqm  
- 979sqft

**Hever**  
Floor area - 80.9sqm  
- 871sqft

Rev.	Date	Description



**Plots  
41-42**

Client <b>Cartwright Homes Ltd</b>			<div><div>hayward</div><div>ARCHITECTS LTD</div><div><div>19 Station Road Hinckley Leicestershire LE10 1AW</div><div>Tel: 01455 635 665 Fax: 01455 618 971 www.hayward-architects.co.uk</div></div></div>	
Project Title <b>Proposed housing Land off Maize Way Galley Common</b>				
Drawing Title <b>Walmer / Hever Semi</b>			Job No.	Drawing No.
Scale <b>1:100</b>	Date <b>June 2023</b>	Sheet <b>A2</b>	<b>24/19</b>	<b>27</b>
Author <b>ZLM</b>	Checked by		Status	<b>PLANNING</b>
THE COPYRIGHT OF THIS DRAWING IS VESTED IN HAYWARD ARCHITECTS LTD. REPRODUCTION IN ANY FORM EITHER IN WHOLE OR IN PART IS FORBIDDEN WITHOUT THE PRIOR WRITTEN PERMISSION OF THE COPYRIGHT HOLDER. DO NOT SCALE FROM DRAWING AND ONLY FIGURED DIMENSIONS ARE TO BE USED				