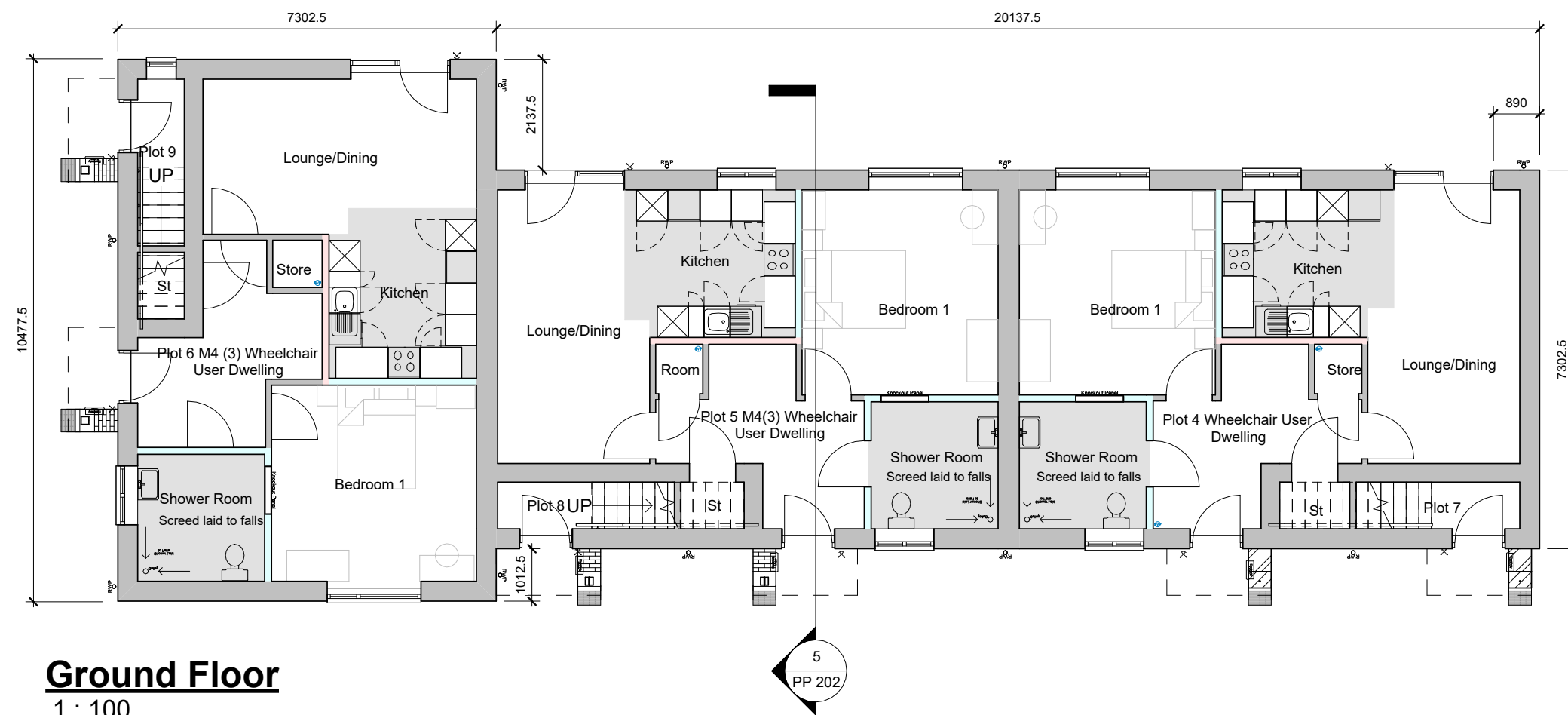


First Floor
1 : 100



Ground Floor
1 : 100

Floor Areas:

Plot 4 Part M(3) = 59.5m²
Plot 5 Part M(3) = 59.5m²
Plot 6 Part M(3) = 59.5m²
Plot 7 = 63.3m²
Plot 8 = 63.3m²
Plot 9 = 63.3m²

Scale Bar
1 : 100



Revision	Date	Description
Pelham		
Clifton Place, 9 Fairham Brook Drive, Clifton, Nottingham, NG11 8PY T: 0115 773 6904 hello@pelham.co.uk www.pelham.co.uk		
STAGE	Planning	
PROJECT	Peggs Close Earl Shilton	
DRAWING TITLE	Plot 4 - 9 Floor Plans	
DRAWING NUMBER	2724/P 201	REVISION
SCALE	As indicated @ A2	DATE 01.09.25
DRAWN BY	BS	CHECKED BY MP
Do not scale this drawing. All dimensions must be checked and verified on site. This drawing is copyright and must not be used for any purpose other than that for which it is issued, without the consent of Pelham.		