



1:500 SITE PLAN

Amendments to scheme:

Reduced to three plots

Plot 3 served of separate access off Leicester Road

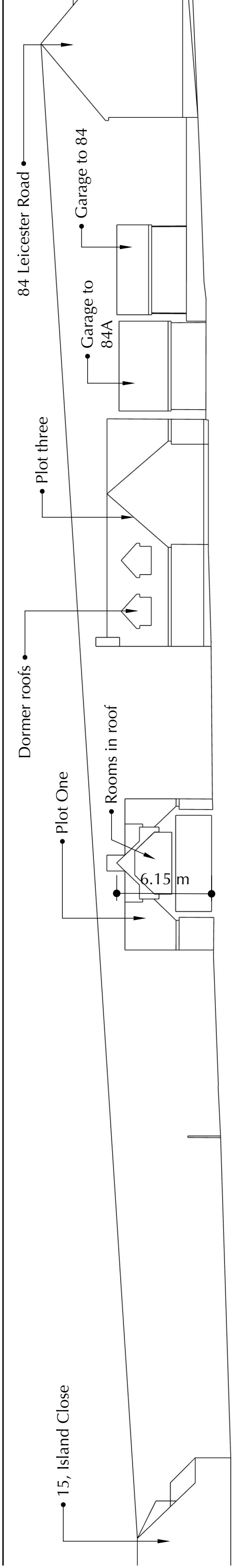
Footprint of buildings reduced by 24% (ORIGINAL SUBMISSION 650sqm - 495sqm As shown)

All three plots to utilise roof space (as per original plots 3 & 4)

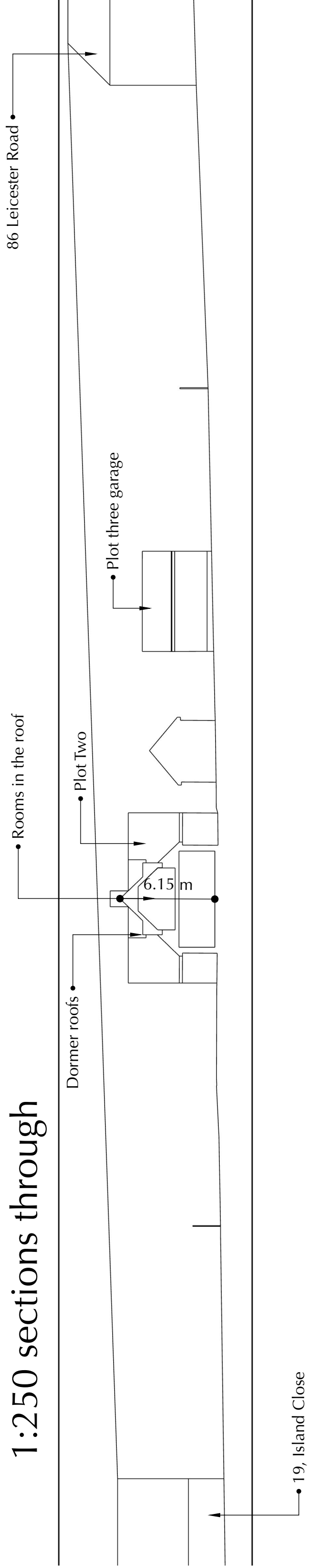
PLOT AREAS

Plot One	725sqm (excl. shared drive).	23% plot coverage
Plot Two.	850sqm	21% plot coverage
Plot Three	925sqm. (incl driveway)	19% plot coverage





1:250 sections through





1:500 SITE PLAN SHOWING ROOT PROTECTION AREAS (RPA)