

This drawing is the property of FPCR Environment and Design Ltd and is issued on the condition it is not reproduced, retained or disclosed to any unauthorised person, either wholly or in part without written consent of FPCR Environment and Design Ltd.

Ordnance Survey material - Crown Copyright. All rights reserved.
Licence Number: 100019980

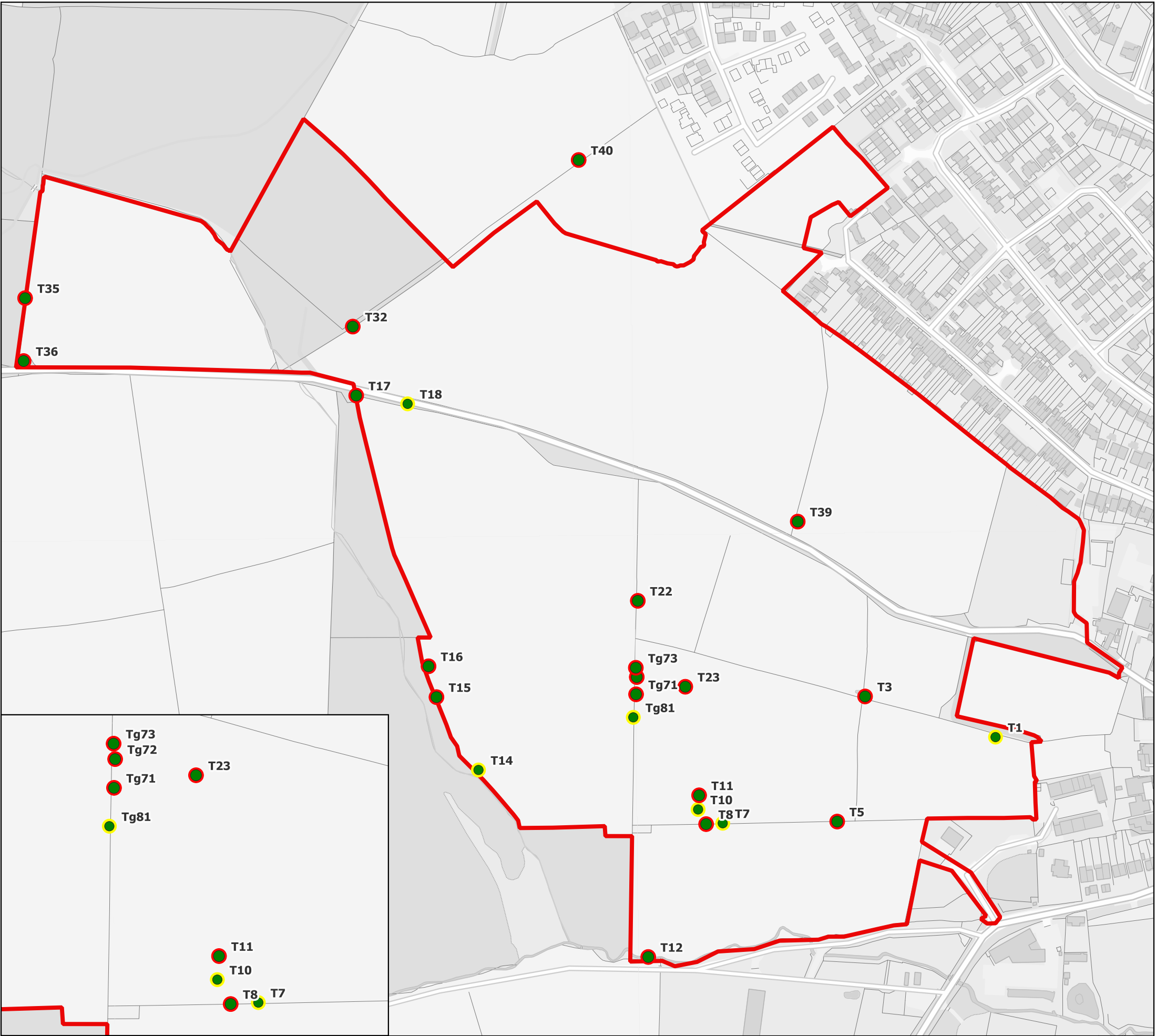
Key

- Site Boundary
- 1km Buffer
- Unidentified Bat Species
- Brown Long-eared Bat
- Common Pipistrelle
- Unidentified Long-eared Bat Species
- Unidentified Myotis Bat Species
- Noctule
- Unidentified Pipistrelle Bat Species
- Soprano Pipistrelle



Key

- Site Boundary
- Trees with PRF-I
- Trees with PRF-M





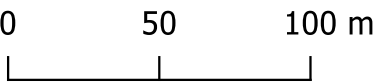
This drawing is the property of FPCR Environment and Design Ltd and is issued on the condition it is not reproduced, retained or disclosed to any unauthorised person, either wholly or in part without written consent of FPCR Environment and Design Ltd.


Ordnance Survey material - Crown Copyright. All rights reserved.
Licence Number: 100019980

Key

- Site Boundary
- Flightline Surveyor Location
- Bat Contacts
 - Common Pipistrelle
- Flight Arrow

Time	Plan Reference	Species	Behaviour	Passes	Direction
20:41	1	Common Pipistrelle	Commuting	1	West
20:54	2	Common Pipistrelle	Commuting	1	Northwest
20:56	3	Common Pipistrelle	Foraging	3	South
20:57	Non-Visual	Common Pipistrelle	Commuting	1	Unknown
20:58	4	Common Pipistrelle	Commuting	1	West
21:04	Non-Visual	Common Pipistrelle	Commuting	1	Unknown
21:06	Non-Visual	Brown Long-Eared	Commuting	1	Unknown
21:10	5	Common Pipistrelle	Commuting	1	East





client

Lagan Homes

project

Land West of Ratby,
Leicestershire

drawing title

FLIGHTLINES SURVEY RESULTS PLAN -
SPRING

scale @ A3

1:2500

drawn

KGf

issue date

5/9/2024

drawing / figure number

Figure 5

rev

-



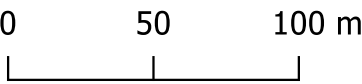
This drawing is the property of FPCR Environment and Design Ltd and is issued on the condition it is not reproduced, retained or disclosed to any unauthorised person, either wholly or in part without written consent of FPCR Environment and Design Ltd.


Ordnance Survey material - Crown Copyright. All rights reserved.
Licence Number: 100019980

Key

- Site Boundary
- Flightline Surveyor Location
- Common Pipistrelle
- Soprano Pipistrelle
- Myotis Species
- Noctule
- Flight Arrow

Bat contacts are provided on a separate page below.





client
Lagan Homes

project
Land West of Ratby,
Leicestershire

drawing title
FLIGHTLINES SURVEY RESULTS PLAN -
SUMMER

scale @ A3
1:2600

drawn
KGF

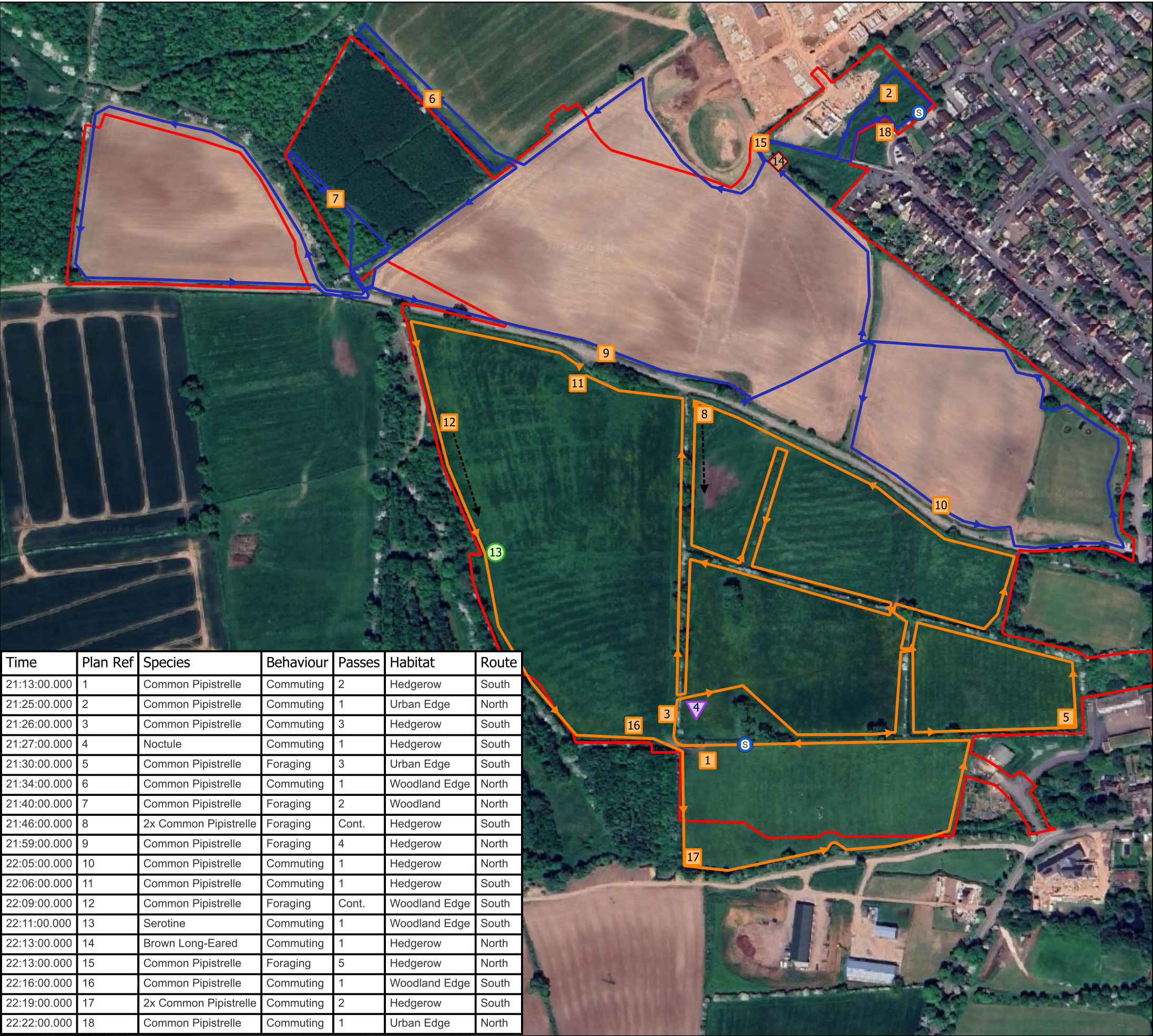
issue date
5/9/2024

rev
-

Figure 6a

Time	Plan Reference	Species	Behaviour	Passes	Direction	Surveyor Position
20:20	Non-Visual	Common Pipistrelle	Commuting	1	Unknown	SP4
20:35	Non-Visual	Soprano Pipistrelle	Foraging	2	Unknown	SP3
20:40	1	Common Pipistrelle	Foraging	Cont.	NW	SP3
20:40	Non-Visual	Soprano Pipistrelle	Foraging	2	Unknown	SP3
20:40	2	Common Pipistrelle	Commuting	1	SW	SP4
20:43	Non-Visual	Common Pipistrelle	Commuting	1	Unknown	SP2
20:44	3	Common Pipistrelle	Foraging	Cont.	N	SP4
20:45	Non-Visual	Common Pipistrelle	Commuting	1	Unknown	SP1
20:45	Non-Visual	Common Pipistrelle	Commuting	1	Unknown	SP3
20:47	1	Common Pipistrelle	Foraging	2	NW	SP3
20:48	4	Common Pipistrelle	Commuting	4	E	SP4
20:50	Non-Visual	Common Pipistrelle	Commuting	2	Unknown	SP2
20:50	Non-Visual	Common Pipistrelle	Foraging	3	Unknown	SP3
20:53	Non-Visual	Common Pipistrelle	Commuting	1	Unknown	SP3
20:54	Non-Visual	Noctule	Commuting	1	Unknown	SP2
20:55	5	Soprano Pipistrelle	Commuting	1	N	SP1
20:55	6	Myotis Species	Foraging	4	E	SP3
20:56	Non-Visual	Common Pipistrelle	Foraging	4	Unknown	SP3
20:57	Non-Visual	Soprano Pipistrelle	Commuting	1	Unknown	SP1
20:58	Non-Visual	Brown Long-Eared	Commuting	1	Unknown	SP3
20:59	7	Soprano Pipistrelle	Commuting	1	N	SP1
20:59	8	Common Pipistrelle	Foraging	Cont.	SE / NW	SP2
21:01	9	Noctule	Commuting	1	W	SP1
21:01	10	Myotis Species	Foraging	2	E	SP3
21:01	Non-Visual	Common Pipistrelle	Foraging	2	Unknown	SP3
21:01	Non-Visual	Noctule	Commuting	1	Unknown	SP3
21:02	Non-Visual	Brown Long-Eared	Foraging	4	Unknown	SP3
21:04	11	Common Pipistrelle	Foraging	1	N	SP2
21:05	1	Common Pipistrelle	Commuting	1	NW	SP3
21:06	12	Soprano Pipistrelle	Commuting	1	SW	SP1
21:06	Non-Visual	Common Pipistrelle	Commuting	1	Unknown	SP1
21:06	8	Common Pipistrelle	Foraging	Cont.	SE / NW	SP2
21:06	Non-Visual	Noctule	Commuting	1	Unknown	SP3
21:07	13	Common Pipistrelle	Commuting	2	S	SP3
21:08	14	Common Pipistrelle	Commuting	2	W	SP1
21:08	Non-Visual	Soprano Pipistrelle	Commuting	1	Unknown	SP2
21:08	Non-Visual	Common Pipistrelle	Commuting	1	Unknown	SP2
21:08	Non-Visual	Soprano Pipistrelle	Foraging	1	Unknown	SP3
21:09	Non-Visual	2x Common Pipistrelle	Foraging	1	Unknown	SP3
21:11	Non-Visual	Common Pipistrelle	Commuting	2	Unknown	SP2
21:11	Non-Visual	Soprano Pipistrelle	Foraging	3	Unknown	SP2
21:12	15	2x Common Pipistrelle	Foraging	4	W	SP1
21:12	Non-Visual	Common Pipistrelle	Foraging	Cont.	Unknown	SP3

21:12	Non-Visual	Noctule	Commuting	1	Unknown	SP3
21:13	Non-Visual	Soprano Pipistrelle	Foraging	2	Unknown	SP3
21:14	Non-Visual	Soprano Pipistrelle	Commuting	1	Unknown	SP1
21:15	Non-Visual	Soprano Pipistrelle	Foraging	3	Unknown	SP2
21:15	Non-Visual	Common Pipistrelle	Foraging	2	Unknown	SP2
21:15	13	Common Pipistrelle	Foraging	3	S	SP3
21:18	Non-Visual	Brown Long-Eared	Commuting	1	Unknown	SP1
21:22	Non-Visual	Common Pipistrelle	Foraging	4	Unknown	SP4
21:26	Non-Visual	Common Pipistrelle	Foraging	1	Unknown	SP4



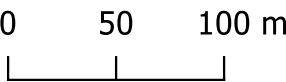
Time	Plan Ref	Species	Behaviour	Passes	Habitat	Route
21:13:00.000	1	Common Pipistrelle	Commuting	2	Hedgerow	South
21:25:00.000	2	Common Pipistrelle	Commuting	1	Urban Edge	North
21:26:00.000	3	Common Pipistrelle	Commuting	3	Hedgerow	South
21:27:00.000	4	Noctule	Commuting	1	Hedgerow	South
21:30:00.000	5	Common Pipistrelle	Foraging	3	Urban Edge	South
21:34:00.000	6	Common Pipistrelle	Commuting	1	Woodland Edge	North
21:40:00.000	7	Common Pipistrelle	Foraging	2	Woodland	North
21:46:00.000	8	2x Common Pipistrelle	Foraging	Cont.	Hedgerow	South
21:59:00.000	9	Common Pipistrelle	Foraging	4	Hedgerow	North
22:05:00.000	10	Common Pipistrelle	Commuting	1	Hedgerow	North
22:06:00.000	11	Common Pipistrelle	Commuting	1	Hedgerow	South
22:09:00.000	12	Common Pipistrelle	Foraging	Cont.	Woodland Edge	South
22:11:00.000	13	Serotine	Commuting	1	Woodland Edge	South
22:13:00.000	14	Brown Long-Eared	Commuting	1	Hedgerow	North
22:13:00.000	15	Common Pipistrelle	Foraging	5	Hedgerow	North
22:16:00.000	16	Common Pipistrelle	Commuting	1	Woodland Edge	South
22:19:00.000	17	2x Common Pipistrelle	Commuting	2	Hedgerow	South
22:22:00.000	18	Common Pipistrelle	Commuting	1	Urban Edge	North


This drawing is the property of FPCR Environment and Design Ltd and is issued on the condition it is not reproduced, retained or disclosed to any unauthorised person, either wholly or in part without written consent of FPCR Environment and Design Ltd.

Ordnance Survey material - Crown Copyright. All rights reserved.
Licence Number: 100019980

Key

- Site Boundary
- Transect Route North
- Transect Route South
- Start Points
- Common Pipistrelle
- Brown Long-eared
- Noctule
- Serotine
- Flight Arrow





client

Lagan Homes

project

Land West of Ratby,
Leicestershire

drawing title

WALKED TRANSECT SURVEY RESULTS PLAN -
SUMMER

scale @ A3

1:3500

drawn

KGF

issue date

5/9/2024

drawing / figure number

Figure 6b

rev

-

APPENDIX A: GROUND BASED TREE ASSESSMENT RESULTS

Tree reference	Tree species	Feature	Roosting Feature Potential
T1	Ash, <i>Fraxinus excelsior</i>	Small knot hole (natural) 4m up on southeastern aspect.	PRF-I
T3	Ash, <i>Fraxinus excelsior</i>	4 knot holes (natural) 5m up on southern aspect. Branch tear out with potential cavities 3m up on western aspect.	PRF-M
T5	Ash, <i>Fraxinus excelsior</i>	Woodpecker hole 9m up on southwestern aspect. Large split below woodpecker hole 7m up on the southwestern aspect. Hazard beam with apparent rot holes on underside 6m up on southeastern aspect. Possible knot hole (natural) above hazard beam on eastern aspect 8m up. Woodpecker hole 10m up on northern aspect.	PRF-M
T7	Ash, <i>Fraxinus excelsior</i>	Two large knot holes (natural) 5m up on western aspect.	PRF-I
T8	Ash, <i>Fraxinus excelsior</i>	Woodpecker hole 5m up on southern aspect, had blue tits showing interest. Large rot hole behind ivy on southern aspect 4m up.	PRF-M
T10	Ash, <i>Fraxinus excelsior</i>	Knot hole (natural) 5m up on southeastern aspect.	PRF-I
T11	Ash, <i>Fraxinus excelsior</i>	Woodpecker hole 4m up on northeastern aspect. Small hazard beam 4m up on western aspect.	PRF-M
T12	Ash, <i>Fraxinus excelsior</i>	Woodpecker hole 5m up on north aspect.	PRF-M
T14	English Oak, <i>Quercus robur</i>	Knot hole (natural) facing east 11m up.	PRF-I
T15	Ash, <i>Fraxinus excelsior</i>	Rot holes in the base of a broken limb on southern aspect 7m up. Dead limb with rot holes on the eastern aspect 10m up.	PRF-M
T16	English Oak, <i>Quercus robur</i>	Knot hole (natural) 8m up near end of pruned limb on north aspect. Knot hole (natural) 6m up on eastern aspect widened by woodpecker. Knot hole (natural) 7m up on northeast that looks like may extend upwards.	PRF-M
T17	Ash, <i>Fraxinus excelsior</i>	A couple of knot hole/ cavity (from pruning) 6m up on west aspect. Butt rot on west aspect that has large opening into a hollow trunk.	PRF-M
T18	English Oak, <i>Quercus robur</i>	Knot hole (natural) 5m up on west aspect.	PRF-I
T22	Ash, <i>Fraxinus excelsior</i>	Woodpecker hole on underside of limbs 5m up on southern aspect.	PRF-M
T23	Ash, <i>Fraxinus excelsior</i>	Woodpecker hole 4m up on eastern aspect.	PRF-M

T32	English Oak, <i>Quercus robur</i>	Hazard beam close to the trunk with a gap 9m up on western aspect. Rot hole from pruning with possible cavity 4m up on western aspect. 4 holes from pruning wounds 4m up on northwestern aspect. Knot hole on northwest limb on the western aspect 6m up. Three other holes on the northwest limb on the northern aspect 6m up. Knot hole cavity from pruning 3m up on eastern aspect.	PRF-M
T35	Ash, <i>Fraxinus excelsior</i>	Butt rot with possible cavities in heart wood on eastern aspect. Rot in the remains at top of trunk 3m up on eastern aspect.	PRF-M
T36	Ash, <i>Fraxinus excelsior</i>	Knot hole (natural) 6m up on southern aspect. Butt rot with a number of rot holes 1m up on northern aspect.	PRF-M
T39	English Oak, <i>Quercus robur</i>	Knot hole (natural) 2m up on eastern aspect. Knot hole (natural) into cavity 3m up on western aspect.	PRF-M
T40	Ash, <i>Fraxinus excelsior</i>	Large knot holes (natural) 3m up on base of eastern limb, one on each side on the northeastern aspect.	PRF-M
TG71	Ash, <i>Fraxinus excelsior</i>	Large branch tear out with a cavity at the top, nesting material was present – possibly old squirrel dray 5m up on southern aspect.	PRF-M
TG72	Ash, <i>Fraxinus excelsior</i>	A couple of woodpecker holes 6m up on southern aspect.	PRF-M
TG73	Ash, <i>Fraxinus excelsior</i>	Woodpecker hole and a rot hole 6m up on eastern aspect.	PRF-M
TG81	Ash, <i>Fraxinus excelsior</i>	Split in a fork with rot 4m up on the northern aspect.	PRF-I