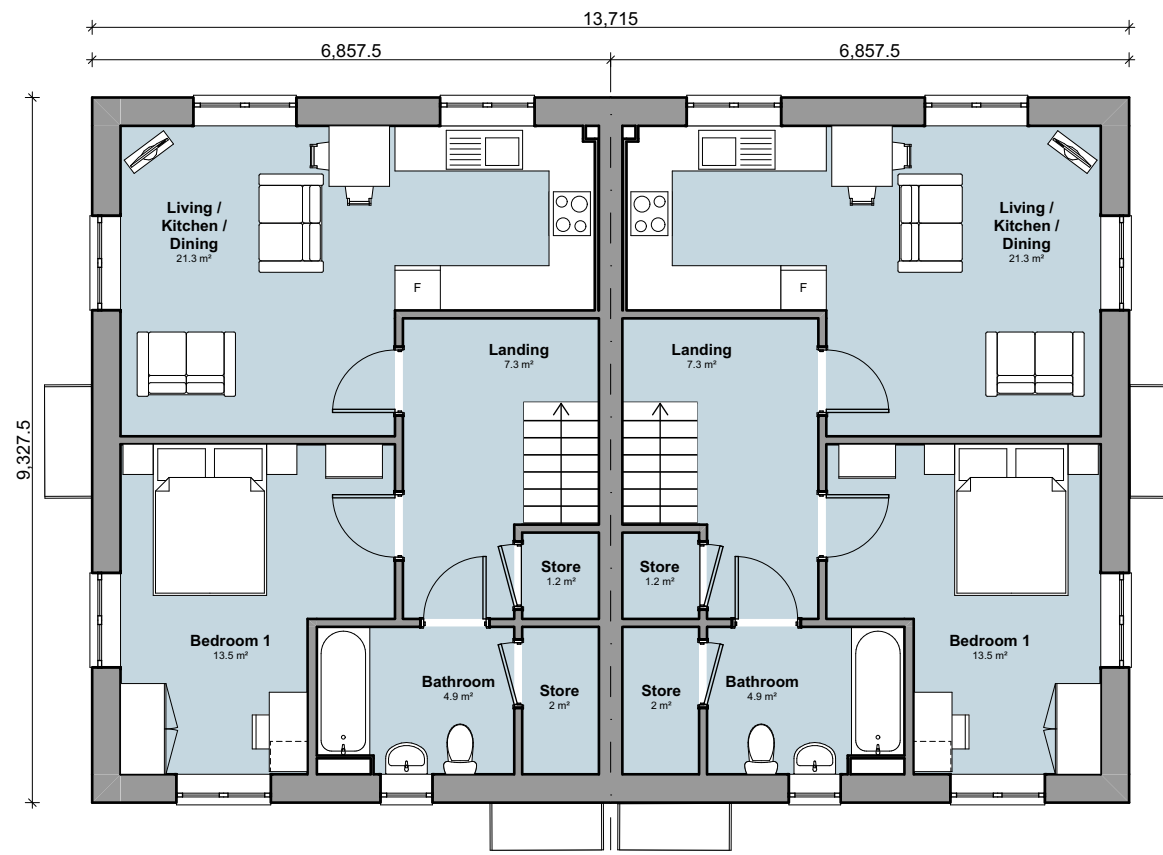


Disclaimer: brp architects ltd. accept no responsibility for work not undertaken fully in accordance with the contents of this drawing and related specifications. This document and its design content is copyright protected ©. It shall be read in conjunction with all other associated project information including models, specifications, schedules and related consultants documents. Do not scale from documents for construction purposes. Dimensions to take precedence. All scales noted correct at original paper size. All dimensions to be checked on site. Immediately report any discrepancies, errors or omissions on this document to the originator. If in doubt ask.

Source File:
M170-628 Housespys Model_Planning.pln

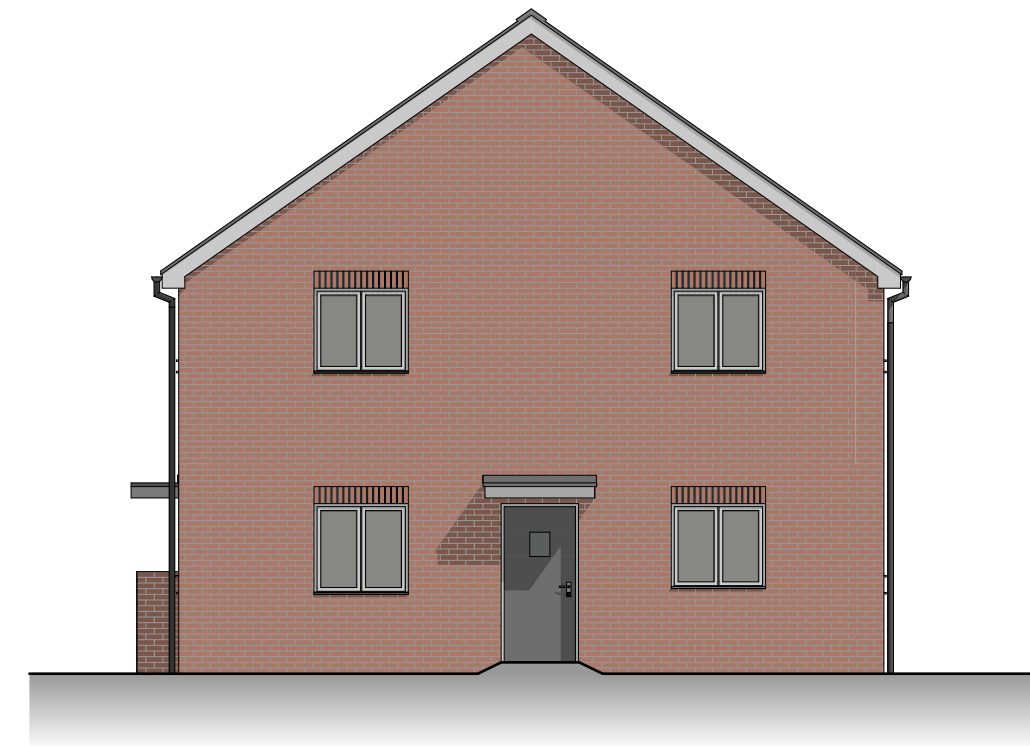
Rev	Date	Drawn	Note
<div><div>MORRO</div><div>Better <i>tomorrow</i> makers</div></div>			
<div><div><div>brp</div><div>architects</div></div></div>		<div>1 Millers Yard Roman Way Market Harborough Leicestershire LE16 7PW t : 01858 464986 brp-architects.com</div>	
<div>Client Morro Partnerships Ltd</div>			
<div>Project Title Proposed Development Land North of Normandy Way, Hinckley</div>			
<div>Drawing Title 1B2P Maisonette</div>			
<div>Drawing Status Planning</div>			
Scale(s) 1:100		Original Paper Size: A2	
Drawn By RM	Checked By (If the copy only)		Date 21.02.2025
Document Reference: M170-BRP-00-ZZ-DR-A-0200-P01			



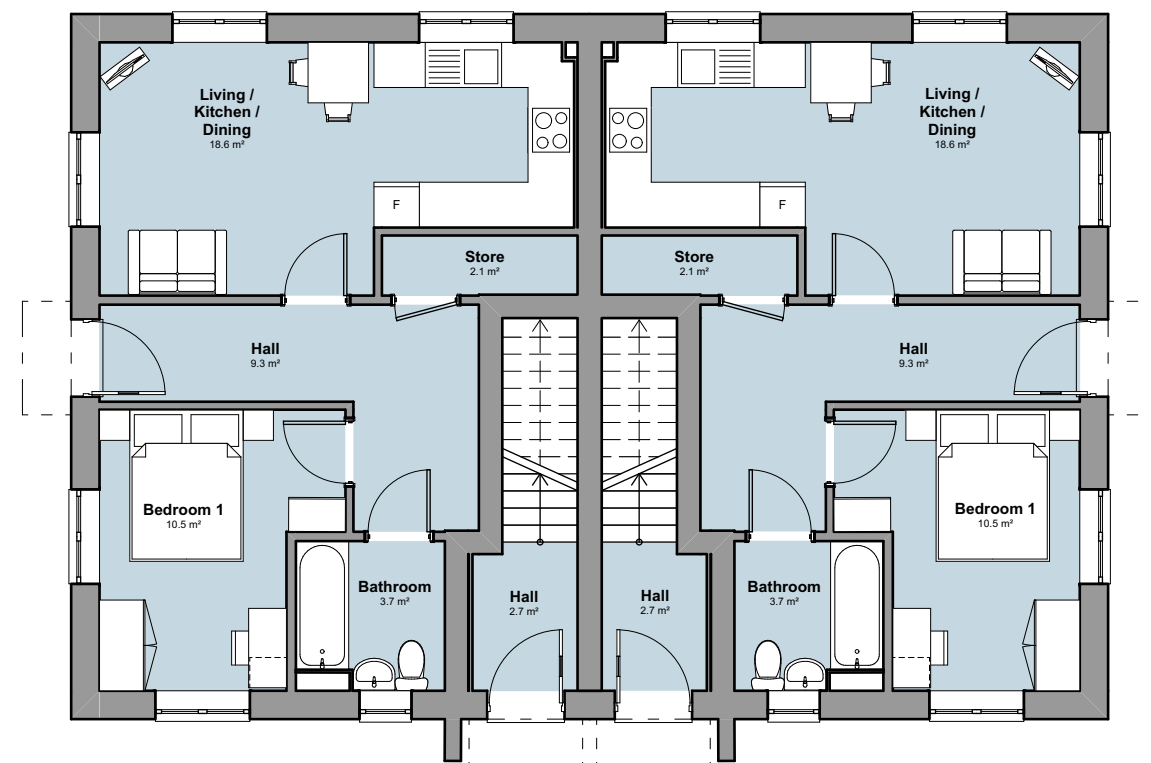
Scale: 1:100



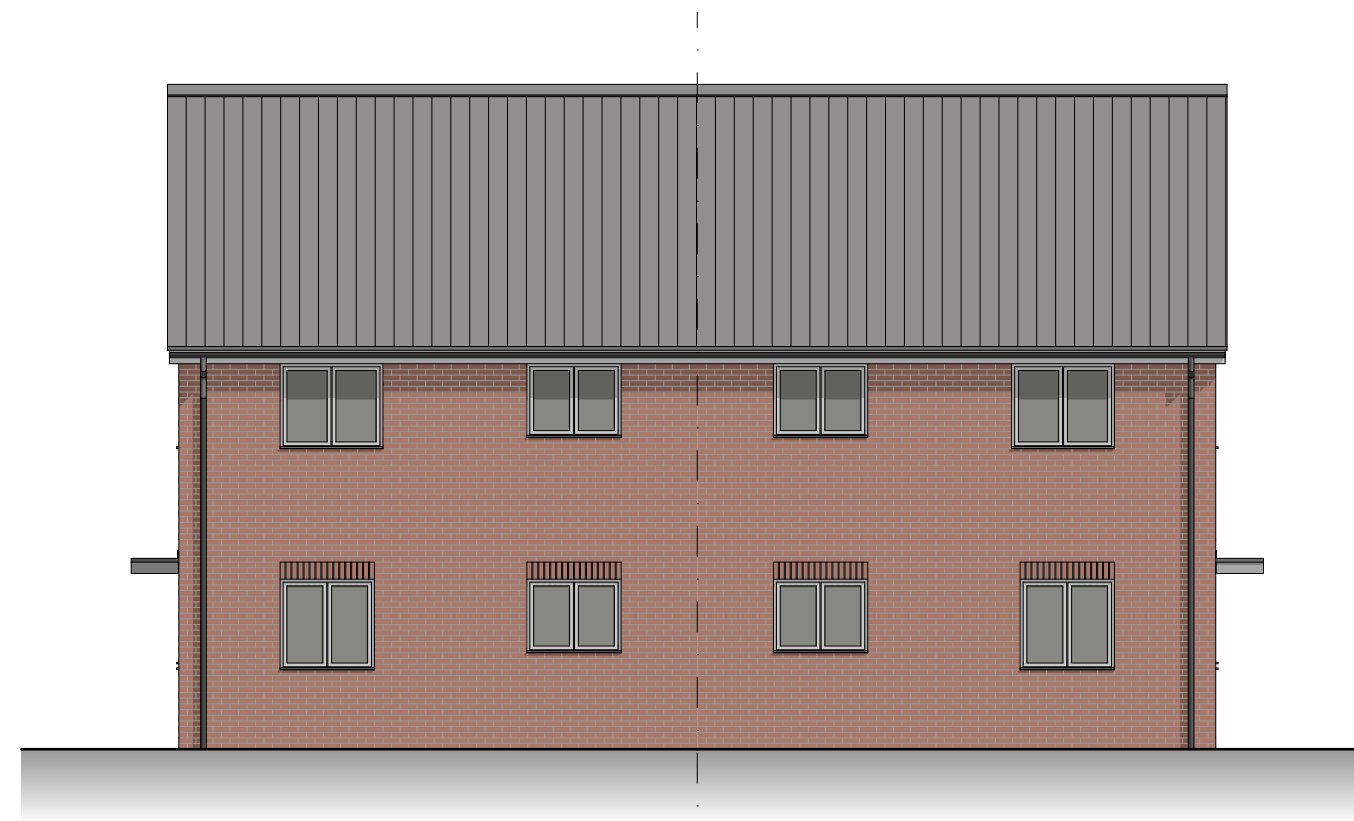
Scale: 1:100



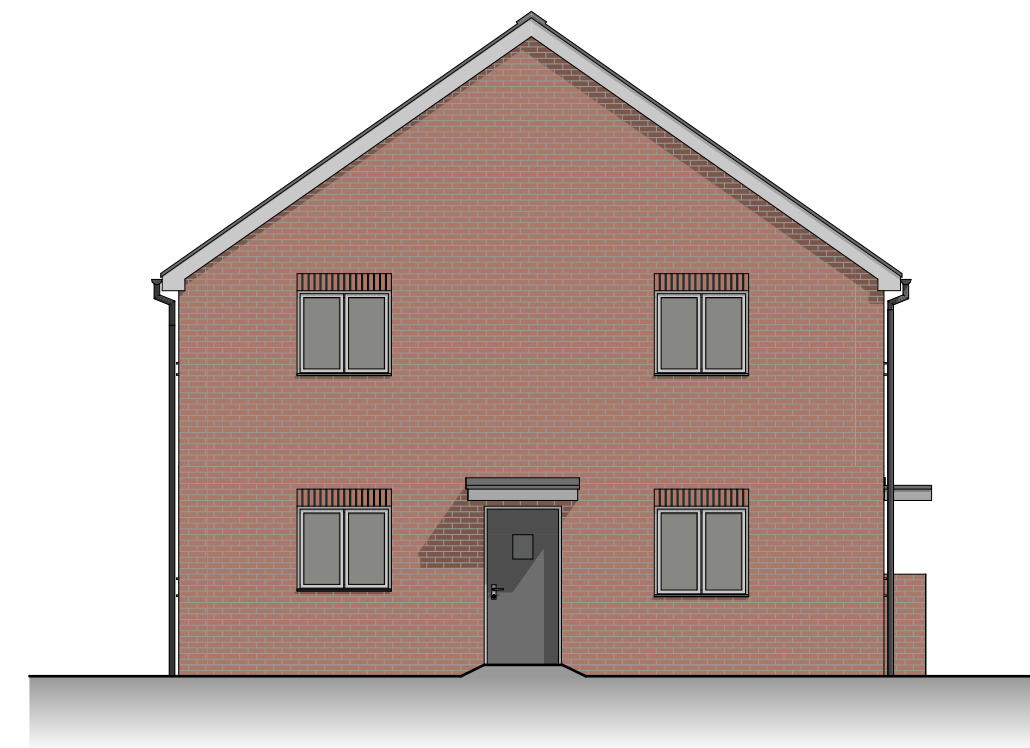
Scale: 1:100



Scale: 1:50



Scale: 1:100



Scale: 1:100

