

NOTES:

**Materials/finishes:**

**Main House**

**Roof:** stone slate tiles clour grey.  
Flat roofs generally torch on mineral felt finishes.

**Walls:**

Front - stained timber shiplap cladding to main elevations and random stone plinth walls generally.  
Side & Rear - painted roughcast render to part side elevations and whole of rear painted white. Part side elevation random stone facing with dressed stone surrounds to windows.

**Windows/doors:** Mix of PPC Aluminium & UPVC double glazed - white.

**Fascias:** black painted timber generally.

**Rainwater and plumbing:** black plastic rectangular profile. Circular downpipes.

**Materials/finishes:**

**POOL House**

**Roof:** torch on mineral felt roof finish to falls.

**Walls:** Generally - random stone facing to garden elevations with fairfaced brick piers between glazed sliding doors. Blind elevation (North West facing fields) are sand cement render painted. Perimeter of roof finished with stained shiplap timber fascia to all elevations.

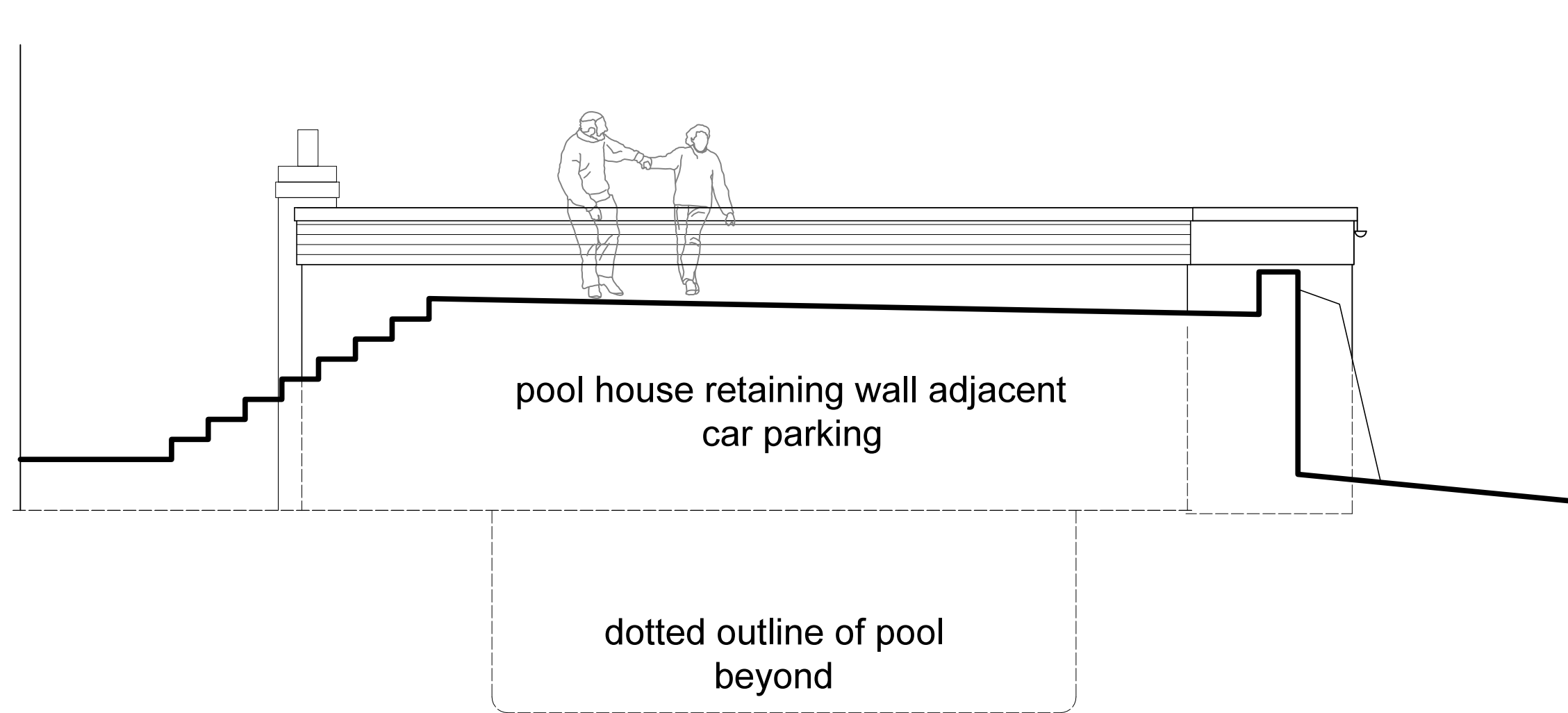
**Sliding doors:** Generally natural aluminium sliding double glazed doors in stained timber subframe.

**Fascias:** stained timber generally.

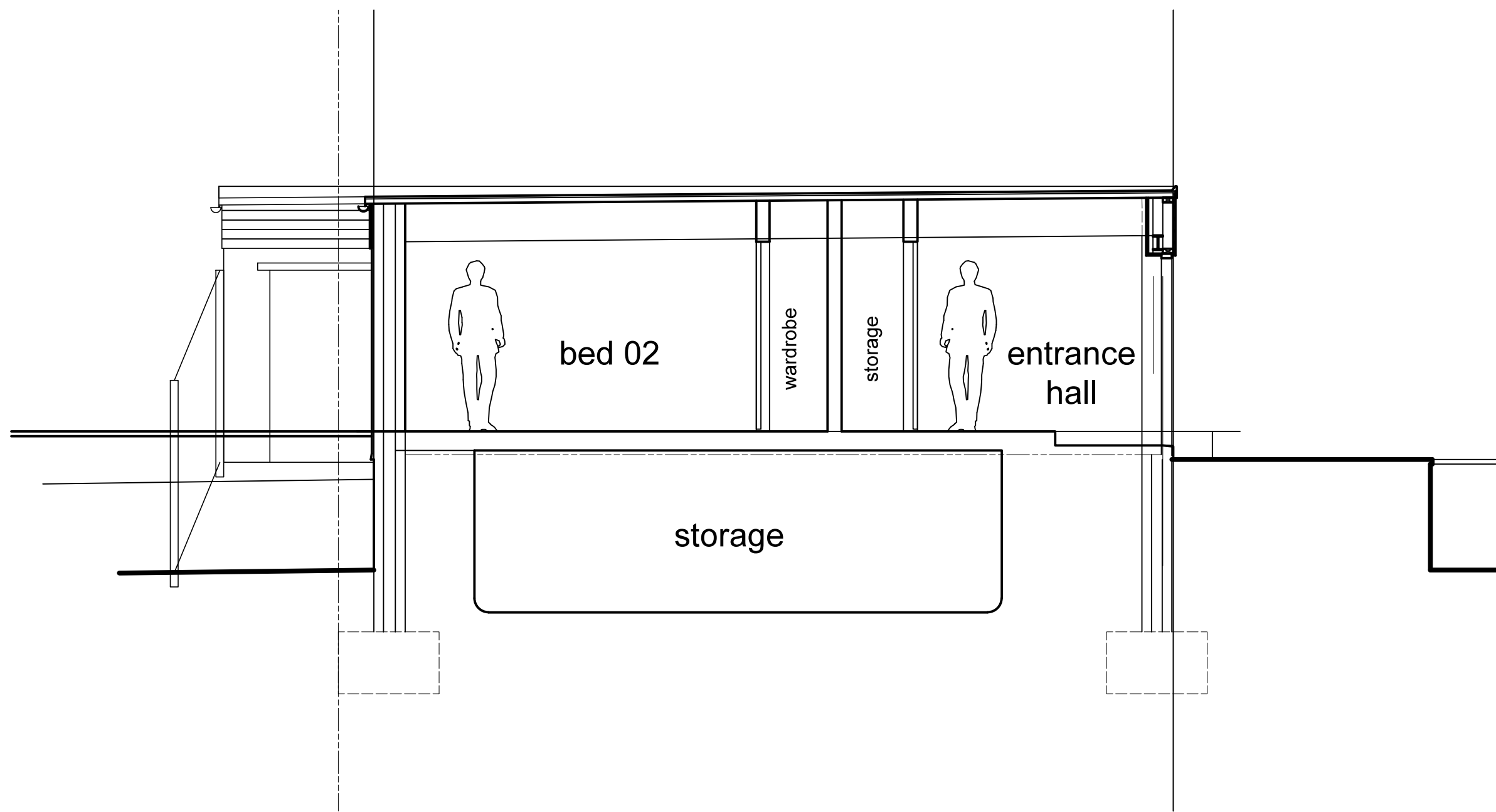
**Rainwater and plumbing:** black plastic rectangular profile. Circular downpipes.



front elevation- south west



rear elevation- north east



section AA

Rev 0: 20210215 : Planning Issue



**LOGIC**

CONSTRUCTION . PROJECT . SERVICES

Tel: 0117 923 9005 Fax: 0117 974 5603

WOODLANDS.

Bradgate Hill,  
Groby,  
Leicester,  
LE6 0FA

POOL HOUSE -  
PROPOSED ELEVATIONS  
sheet 2 of 2

Drawn	PWC	04/07/24	By	A1	1-50
Check	PWC	04/07/24	By		

24566- 22 REV 0