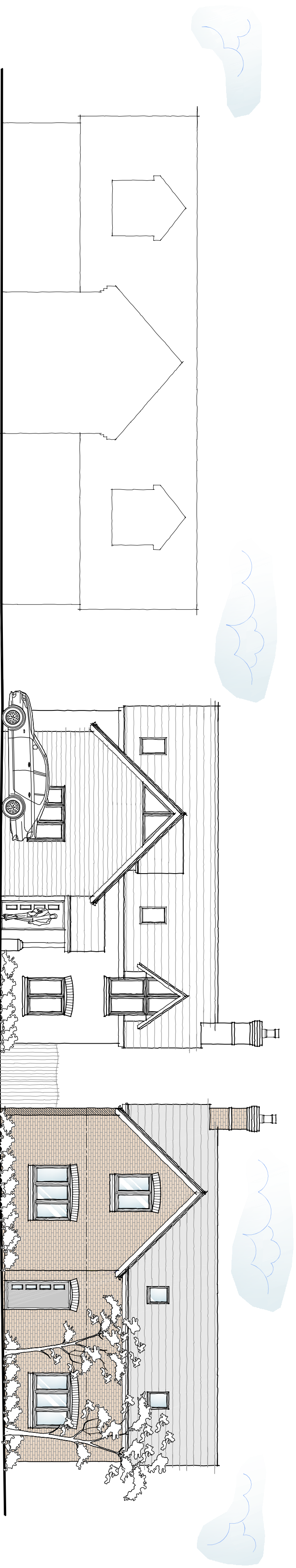


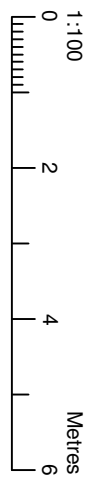
This drawing is to be read in conjunction with Drawing No. 21.4070.01 'Topographical Survey'

Schedule of Accommodation (Approximate)		
Plot 2	4 Bedroom	1650 sq ft

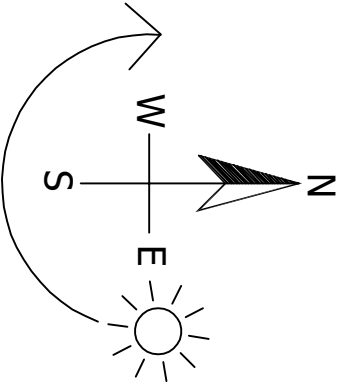


Illustrative Street Scene of development from within the site

Scale 1:100



Proposed Site and Roof Plan
Scale 1:200



DETAILED PLANNING PROPOSALS

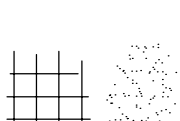
PROPOSED NEW DWELLING - DORAL - NUTTS LANE - HINCKLEY - LEICESTERSHIRE

LANDSCAPING SPECIFICATION

- Denotes new tree planting mix
 - Male Everest (Cauli apex) Light Standard 60cm girth 2.5-3.00m overall height
 - Male Golden Hornet (Cauli apex) Light Standard 60cm girth 2.5-3.00m overall height



- Indicates shrub planting
 - S1 Dorset (Gorse scapula) 20%
 - S2 Dorset (Gorse scapula) 20%
 - S3 Dorset (Gorse scapula) 20%
 - S4 Dorset (Gorse scapula) 20%
 - S5 Dorset (Gorse scapula) 20%
 - S6 Dorset (Gorse scapula) 20%
 - S7 Dorset (Gorse scapula) 20%
 - S8 Dorset (Gorse scapula) 20%
 - S9 Dorset (Gorse scapula) 20%
 - S10 Dorset (Gorse scapula) 20%
 - S11 Dorset (Gorse scapula) 20%
 - S12 Dorset (Gorse scapula) 20%
 - S13 Dorset (Gorse scapula) 20%
 - S14 Dorset (Gorse scapula) 20%
 - S15 Dorset (Gorse scapula) 20%
 - S16 Dorset (Gorse scapula) 20%
 - S17 Dorset (Gorse scapula) 20%
 - S18 Dorset (Gorse scapula) 20%
 - S19 Dorset (Gorse scapula) 20%
 - S20 Dorset (Gorse scapula) 20%
 - S21 Dorset (Gorse scapula) 20%
 - S22 Dorset (Gorse scapula) 20%
 - S23 Dorset (Gorse scapula) 20%
 - S24 Dorset (Gorse scapula) 20%
 - S25 Dorset (Gorse scapula) 20%
 - S26 Dorset (Gorse scapula) 20%
 - S27 Dorset (Gorse scapula) 20%
 - S28 Dorset (Gorse scapula) 20%
 - S29 Dorset (Gorse scapula) 20%
 - S30 Dorset (Gorse scapula) 20%
 - S31 Dorset (Gorse scapula) 20%
 - S32 Dorset (Gorse scapula) 20%
 - S33 Dorset (Gorse scapula) 20%
 - S34 Dorset (Gorse scapula) 20%
 - S35 Dorset (Gorse scapula) 20%
 - S36 Dorset (Gorse scapula) 20%
 - S37 Dorset (Gorse scapula) 20%
 - S38 Dorset (Gorse scapula) 20%
 - S39 Dorset (Gorse scapula) 20%
 - S40 Dorset (Gorse scapula) 20%
 - S41 Dorset (Gorse scapula) 20%
 - S42 Dorset (Gorse scapula) 20%
 - S43 Dorset (Gorse scapula) 20%
 - S44 Dorset (Gorse scapula) 20%
 - S45 Dorset (Gorse scapula) 20%
 - S46 Dorset (Gorse scapula) 20%
 - S47 Dorset (Gorse scapula) 20%
 - S48 Dorset (Gorse scapula) 20%
 - S49 Dorset (Gorse scapula) 20%
 - S50 Dorset (Gorse scapula) 20%
 - S51 Dorset (Gorse scapula) 20%
 - S52 Dorset (Gorse scapula) 20%
 - S53 Dorset (Gorse scapula) 20%
 - S54 Dorset (Gorse scapula) 20%
 - S55 Dorset (Gorse scapula) 20%
 - S56 Dorset (Gorse scapula) 20%
 - S57 Dorset (Gorse scapula) 20%
 - S58 Dorset (Gorse scapula) 20%
 - S59 Dorset (Gorse scapula) 20%
 - S60 Dorset (Gorse scapula) 20%
 - S61 Dorset (Gorse scapula) 20%
 - S62 Dorset (Gorse scapula) 20%
 - S63 Dorset (Gorse scapula) 20%
 - S64 Dorset (Gorse scapula) 20%
 - S65 Dorset (Gorse scapula) 20%
 - S66 Dorset (Gorse scapula) 20%
 - S67 Dorset (Gorse scapula) 20%
 - S68 Dorset (Gorse scapula) 20%
 - S69 Dorset (Gorse scapula) 20%
 - S70 Dorset (Gorse scapula) 20%
 - S71 Dorset (Gorse scapula) 20%
 - S72 Dorset (Gorse scapula) 20%
 - S73 Dorset (Gorse scapula) 20%
 - S74 Dorset (Gorse scapula) 20%
 - S75 Dorset (Gorse scapula) 20%
 - S76 Dorset (Gorse scapula) 20%
 - S77 Dorset (Gorse scapula) 20%
 - S78 Dorset (Gorse scapula) 20%
 - S79 Dorset (Gorse scapula) 20%
 - S80 Dorset (Gorse scapula) 20%
 - S81 Dorset (Gorse scapula) 20%
 - S82 Dorset (Gorse scapula) 20%
 - S83 Dorset (Gorse scapula) 20%
 - S84 Dorset (Gorse scapula) 20%
 - S85 Dorset (Gorse scapula) 20%
 - S86 Dorset (Gorse scapula) 20%
 - S87 Dorset (Gorse scapula) 20%
 - S88 Dorset (Gorse scapula) 20%
 - S89 Dorset (Gorse scapula) 20%
 - S90 Dorset (Gorse scapula) 20%
 - S91 Dorset (Gorse scapula) 20%
 - S92 Dorset (Gorse scapula) 20%
 - S93 Dorset (Gorse scapula) 20%
 - S94 Dorset (Gorse scapula) 20%
 - S95 Dorset (Gorse scapula) 20%
 - S96 Dorset (Gorse scapula) 20%
 - S97 Dorset (Gorse scapula) 20%
 - S98 Dorset (Gorse scapula) 20%
 - S99 Dorset (Gorse scapula) 20%
 - S100 Dorset (Gorse scapula) 20%



- Indicates new turf areas
 - Indicates new turf areas

All planting and seeding or turfing shall be carried out in the first planting and seeding seasons following the occupation of the buildings or the completion of the development, whichever is the sooner, and any plants or trees which within the period of five years from the completion of the development die, are removed or are seriously damaged or diseased shall be replaced within the next planting season with others of similar size and species.

All (other) site boundary treatments as indicated

Revisions:		
B	Drawing update to IA comments	22.12.25
A	Drawing update to IA comments	06.10.25

DAVID GRANGER
ARCHITECTURAL DESIGN LTD

David Granger Architectural Design Ltd
The Old Cottage Hospital
Leicester Road
Leicester LE1 2JH
Leicestershire
LE65 1DB
T 01530 566939
W www.davidgrangerdesign.com

Project
Proposed New Dwelling
Doral, Nuts Lane
Hinckley
Leicestershire

Client
Mr. W. Moss

Drawing
Detailed Planning Proposals
Sheet 2 of 3

Drawing Number
21.4070.20B

Date: April 2025
Scale: As Shown
Drawn By: SM
Checked By: MS

Figured dimensions must be taken in preference to scaled dimensions and any discrepancies are to be referred to David Granger Architectural Design Limited. Contractors, sub-contractors and suppliers must verify all dimensions on site before commencing work. David Granger Architectural Design Limited. Copyright © David Granger Architectural Design Limited. All rights reserved. Licence No. AR10000493. Landmark Ref. LD08165. Company Reg. No. 5089512.