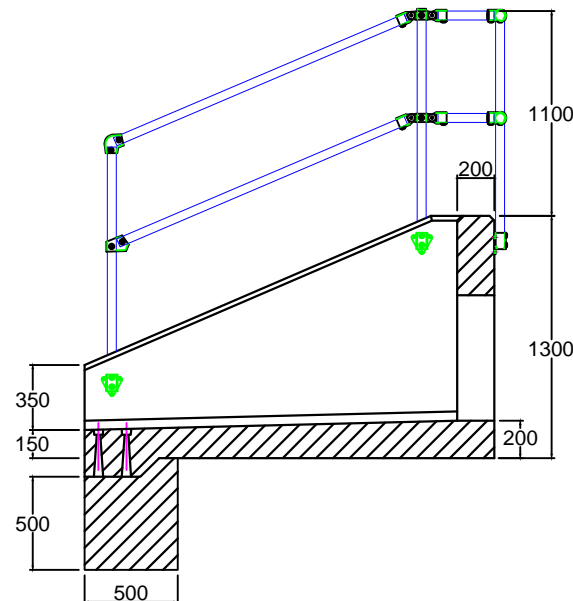
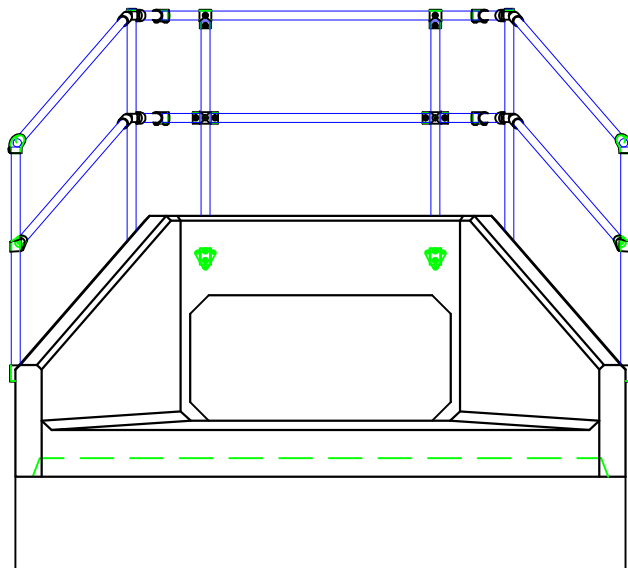
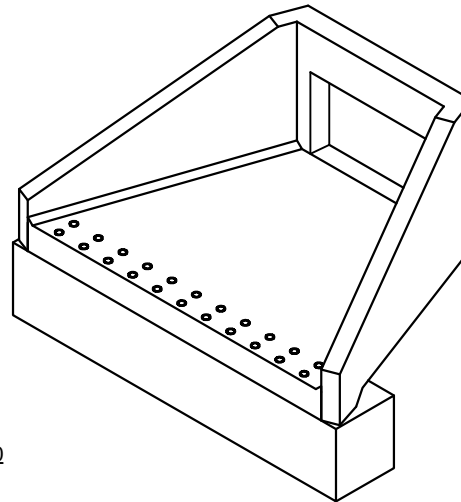
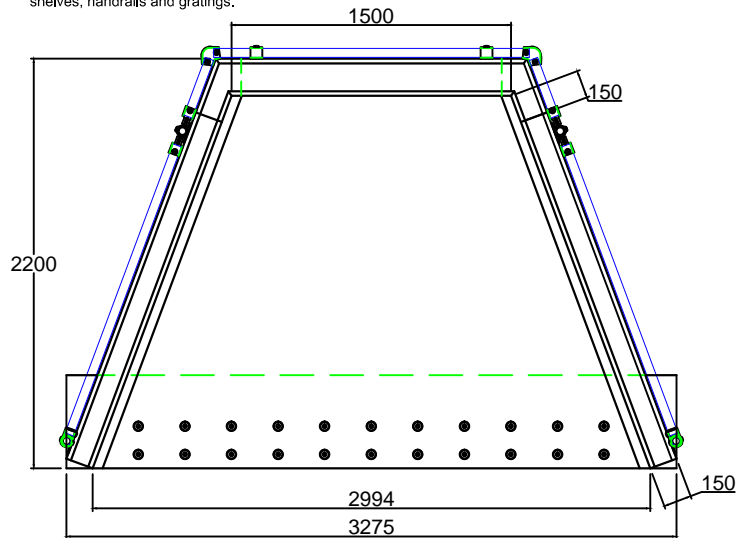


CSP15A Specification Information

- Opening in back wall cast to mirror the internal profile of the Pcc box culvert its being used with
- Invert level of PCC box culvert can be set to your specification
- There is a 50mm fall from the back wall of the headwall to the front of the spillway
- Max internal dimensions of a PCC box culvert 1400mm high x 675mm wide
- Culvert headwalls can include a variety of accessories including low flow channels, mammal shelves, handrails and gratings.



Kee Klamp Specification Information

- Galvanised steel kee klamp handrail
- 1100mm high above back wall
- GRP / FRP hand rails also available

Althon CSP15A Headwall Installation

Units should be bedded on minimum 150mm of well compacted selected, uniformly graded granular fill.
Material: Reinforced concrete
Weight approximately 6554kg
All dimensions in mm