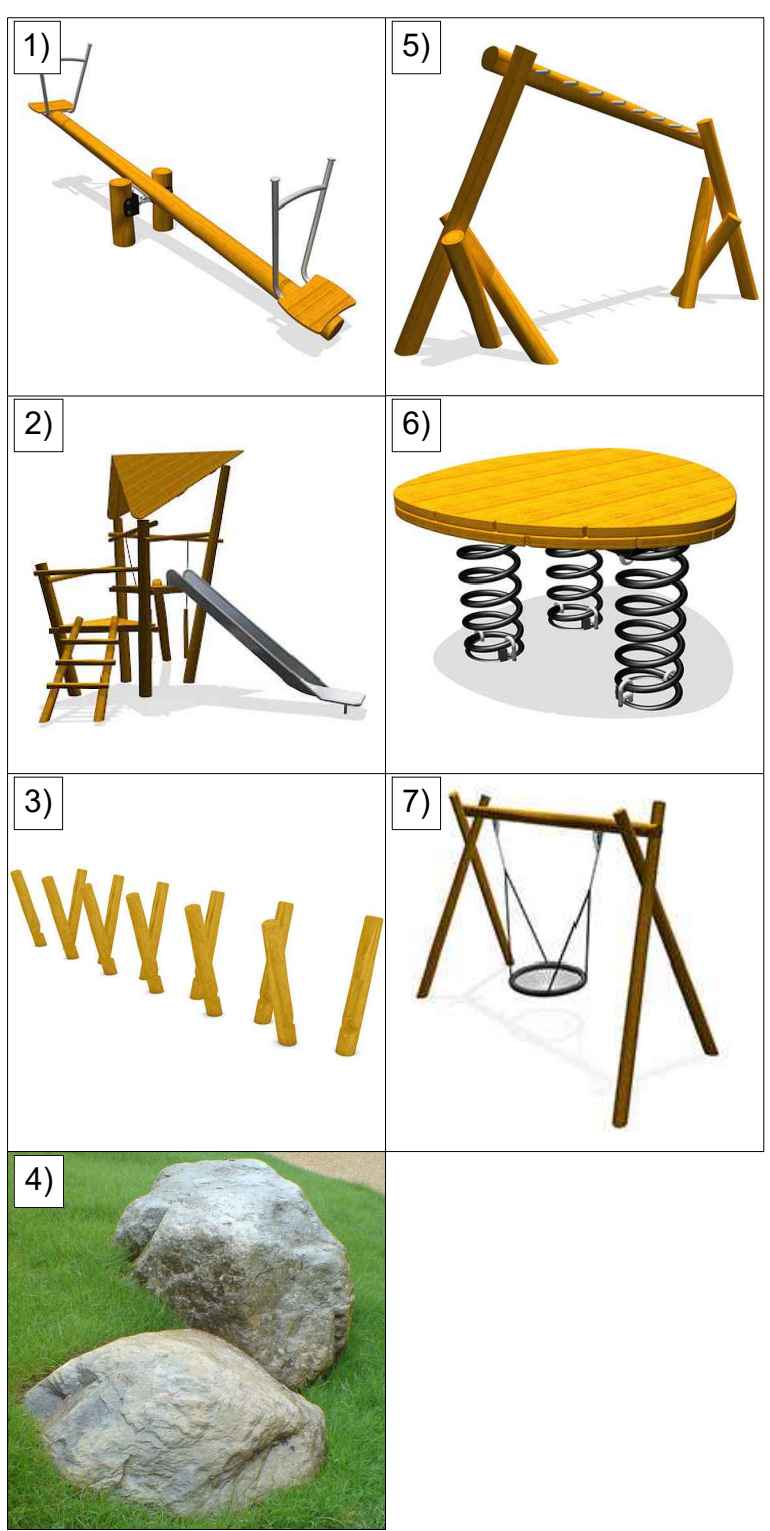


LEGEND

1. STANDING SEE SAW
As Miracle Design & Play
Ref: MB0005
Or similar approved
2. MULTI UNIT WITH SLIDE
As Miracle Design & Play
Ref: MB1003
Or similar approved
3. STILTS
As Miracle Design & Play
Ref: MB2038
Or similar approved
4. FEATURE BOULDERS
Caledonian Glacial Boulders
Mixture of Sizes, Well-rounded
Partly Embedded in the Soil
5. MONKEY BARS
As Miracle Design & Play
Ref: MB1531
Or similar approved
6. SPRINGY PLATE
As Miracle Design & Play
Ref: MB0016
Or similar approved
7. BIRDS NEST SWING
As Miracle Design & Play
Ref: MB0012
Or similar approved
- GRASS MATTING
As Supplied by Technia Ltd
1.5x1m Grass Mats Pegged into Place &
Tied Together with Cable Ties
Or similar approved
- FURNITURE
As Supplied by Broxap Ltd
2x2 Ashbourne Seat Ref: BX 720
x1 Derby Standard Litter Bin Ref: BX45 2550-S
Or similar approved
- SIGNAGE
Ownership/Usage
Exact Wording to be Agreed with the Local
Planning Authority
- POST AND RAIL FENCE
1.2m High
Regional Specification
- SELF-CLOSING GATES
x1 1.2m High Single Gate/Double Pedestrian & Veh
As Supplied by Wicksteed Playgrounds Ltd
Ref: NFLGATE12 & NFLPGATE12
Or similar approved



LEGEND

- EXISTING VEGETATION
To be removed
- EXISTING HEDGES
With Root Protection Area
To be retained
- PROPOSED TREES
Select/Standard/Heavy Standard
See Schedule
- SPECIMEN PLANTING
See Schedule
- ORNAMENTAL HEDGE
See Schedule
TOTAL LENGTH: 608m
- NATIVE HEDGE
See Schedule
TOTAL LENGTH: 391m
- PROPOSED PLANTING
Shrubs/Herbaceous/Grasses
See Schedule
- TURF
TOTAL AREA: 2359m²
- AMENITY GRASS AREAS
Emergents 6222 down at 25m²
Kept mown short to 40mm
TOTAL AREA: 1132m²
- WILDFLOWER MEADOW
Emergents 6242 down at 4 g/m²
TOTAL AREA: 6543m²
(Planting guidelines to be retained and accepted
wherever possible to support tree & shrub)
- NATIVE BUFFER MIX
See Schedule
TOTAL AREA: 355m²
- MARGINAL MIX
See Schedule
TOTAL AREA: 911m²
- GRAVEL
40mm of Stone over Membrane
TOTAL AREA: 3m²

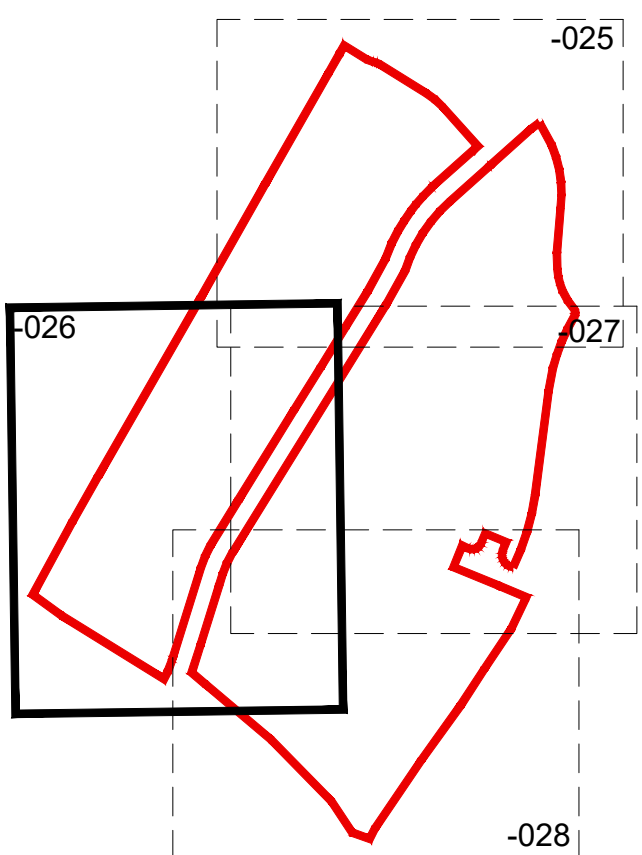
THIS DRAWING IS TO BE READ IN CONJUNCTION WITH
SEPARATE GROUP / SITE SPECIFIC CONSTRUCTION
NOTES AND MATERIALS SPECIFICATION.

DRAWING NOTES

All tree and shrub locations and species must be taken into consideration by the project Structural Engineer to ensure that foundation design accords with the specifications set out in Chapter 4 of the NHBC Standards. The landscape Contractor must ensure that plant material is planted in the locations shown and with NO SUBSTITUTIONS made without consulting the Group Landscape Design Department. It is the Landscape Contractor's responsibility to ensure that all underground services have been located and identified in advance of tree pit excavation so that no services are damaged or compromised by tree planting. Any changes to tree positions, species or specifications must be approved by the Group Landscape Design Department. Underground service strips are to be kept free of all plant material. Contractors must comply with all Health and Safety regulations and be aware of project/site specific information including referring to the information set out in the CDM drawings.

SHEET LAYOUT
LOCATION PLAN

NOT TO SCALE

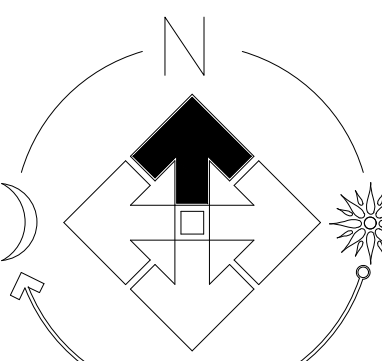


CDM LEGEND

- Brief description of risk.
Caution overhead / underground services.
- Sewer easement.
- Trees have protection order in place, guarding required.

NOTES:

Principal contractor to ensure all health and safety procedures are being correctly followed in relation to all temporary works.



PLOT NUMBER
SHEET REF.

024, 1-27, 30-35, 108-111, 114, 118-127
025, 29-31, 36-59, 60-79
026, 27-32, 43-48, 97-117, 88-92, 60-75
027, 60-63, 70-78, 80-96,

FOR SPECIFICATION,
PLANTING DETAILS &
SCHEDULE SEE DRAWING
EM100-LS-029

Revision	Date
A	Updated to show LEAP
B	Updated POS on northern boundary
C	Revised POS on southern boundary
D	Updated landscaping to latest site layout
E	Revised POS on northern boundary

Job: SITE LANDSCAPING - FITCHETT

Title: Site Landscaping

Scale: 1:200 @A0 Drawn: RB
Date: March 2025 Checked: PMJ

THIS DRAWING AND THE BUILDING WORKS DEFINED ARE THE COPYRIGHT OF J S BLOOR (SERVICES) LIMITED AND MAY NOT BE REPRODUCED OR ADAPTED EXCEPT BY WRITTEN PERMISSION. NO LIABILITY WILL BE ACCEPTED FOR MISUSE OR FOR ANY DAMAGE TO PERSONS OR PROPERTY.

J S BLOOR (SERVICES) LIMITED
ASHBY ROAD, MEASHAM, SWADLOWCOTE,
DERBYSHIRE DE12 7JP
TELEPHONE 01530 270100 FACSIMILE 01530 272008

Drawing No. EM100-LS-026e

HINCKLEY - PH7