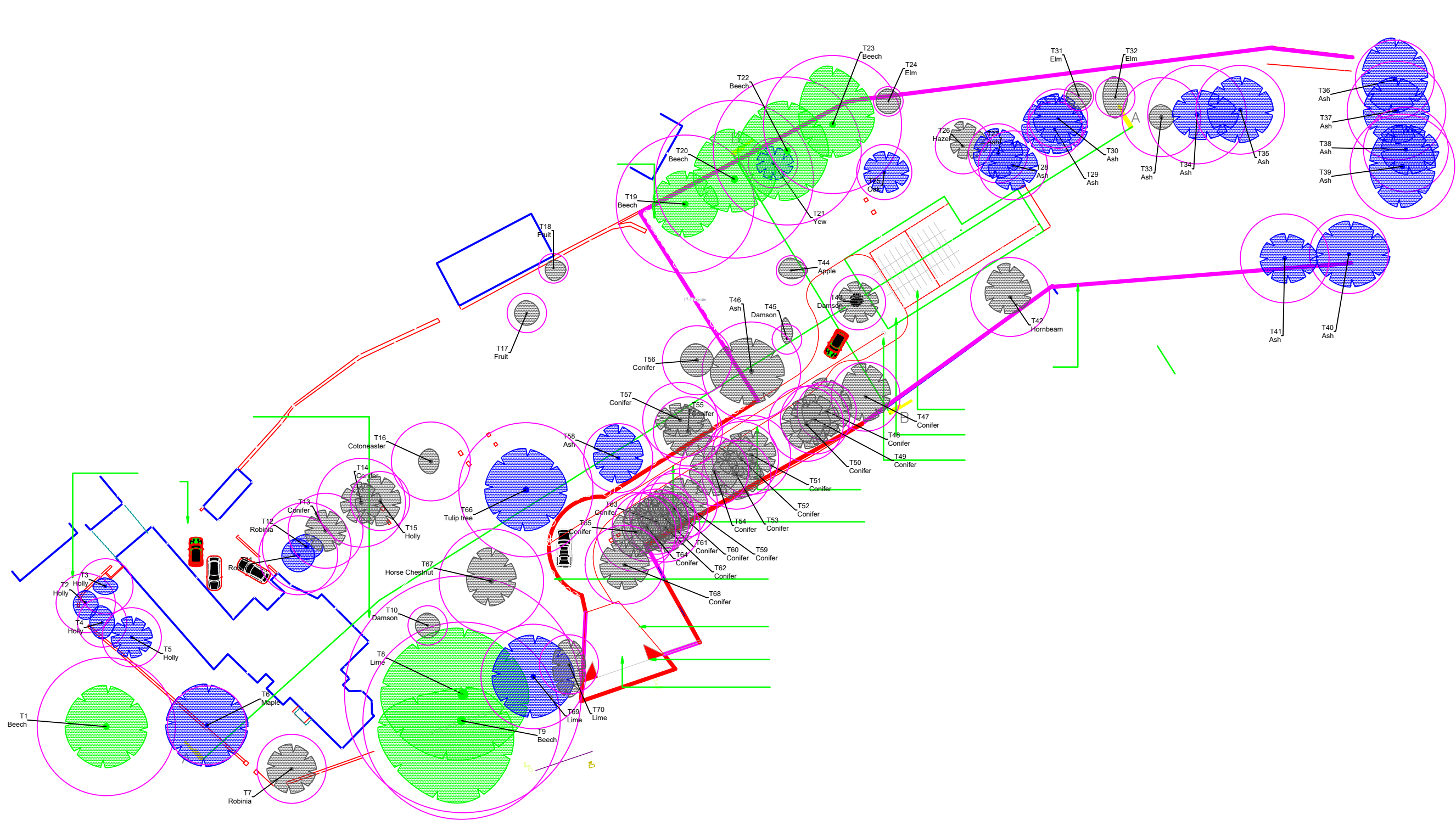


Tree Impact Plan

showing surveyed trees, against the planning proposals



Example

- Canopy extent - patterned green line
- Category key - coloured stem
- BS5837:2012 calculated root protection area- Magenta
- Tree No. - tag

Category A

Trees of high quality with an estimated remaining life expectancy of at least 40 years.

Category B

Trees of moderate quality with an estimated remaining expectancy of at least 20 years.

Category C

Trees of low quality with an estimated remaining life expectancy of at least 10 years, or a stem diameter below 150mm.

Category U

Trees in such a condition that they cannot realistically be retained as living trees in the context of the current land use for longer than 10 years.

Groups with coloured hatch showing category.

Hedge

No.	Revision/Issue	Date
1		
2		



Ryton Organic Gardens, Ryton-on-Dunsmore
Tel: 02476 217725

Project Name and Address

**MANOR HOUSE,
CHURCH STREET,
BURBAGE, LE10 2DB**

Date 2020-01(12)	Sheet 1 of 1
Date 2023-04-27 11:46:28	
Scale 1 to 500 at A3	