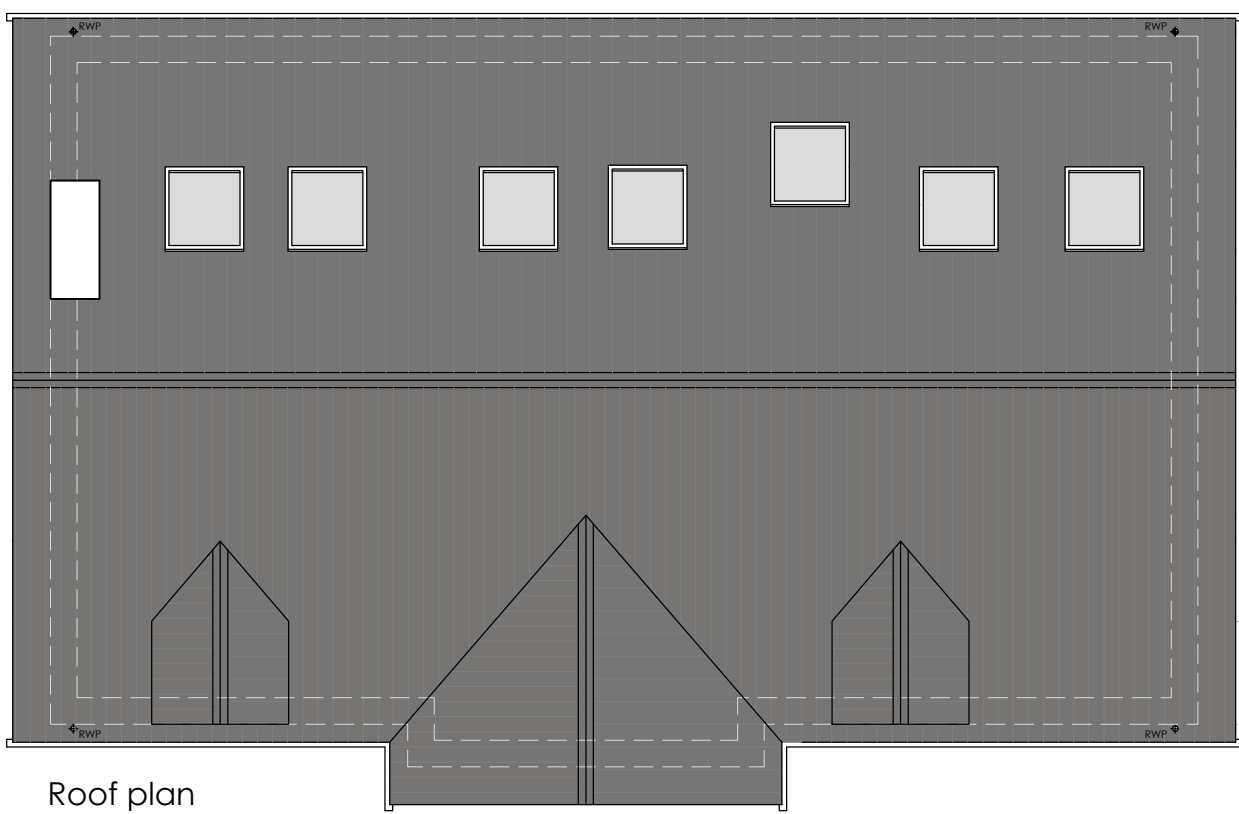
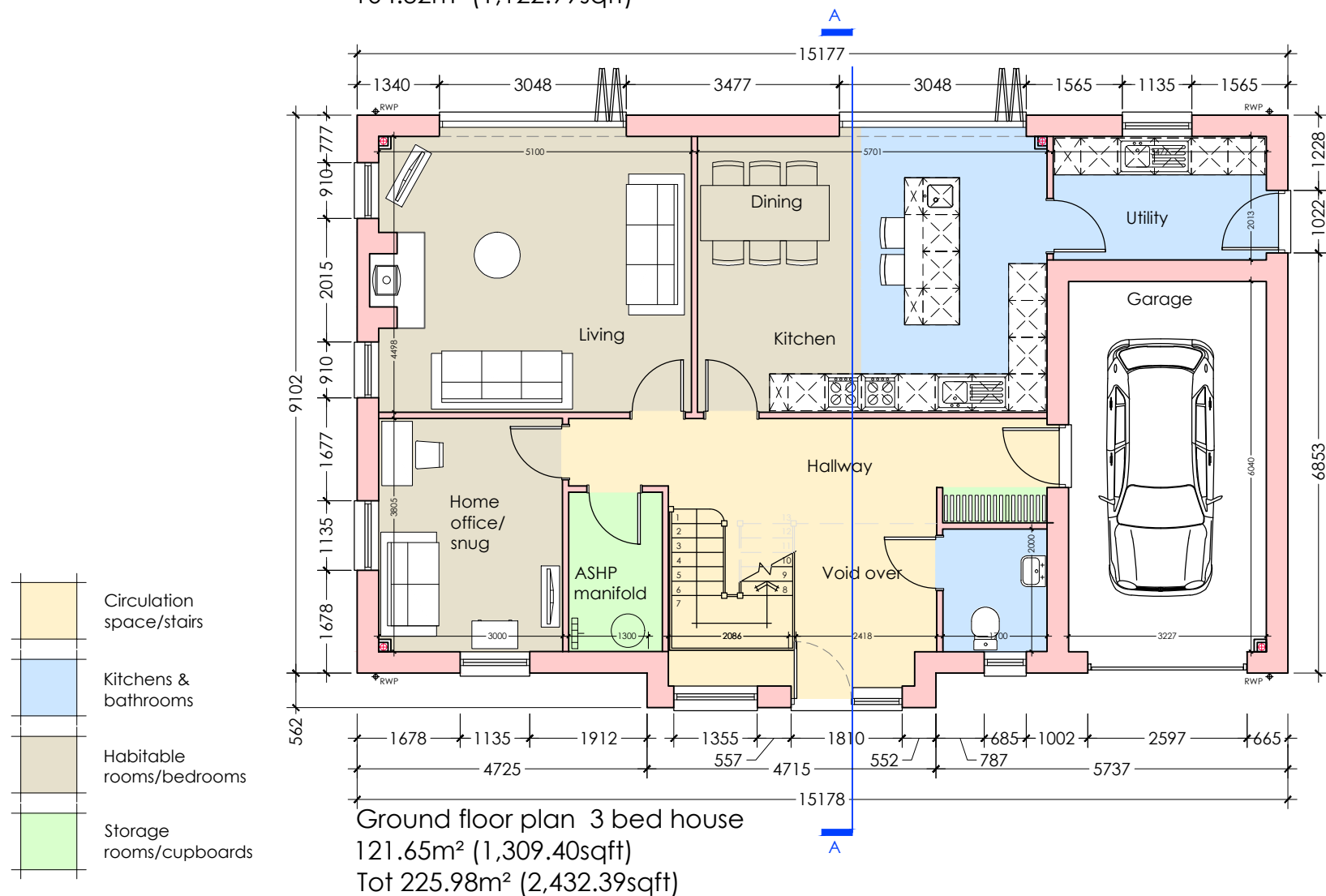


First floor plan 3 bed house
104.32m² (1,122.99sqft)



Roof plan

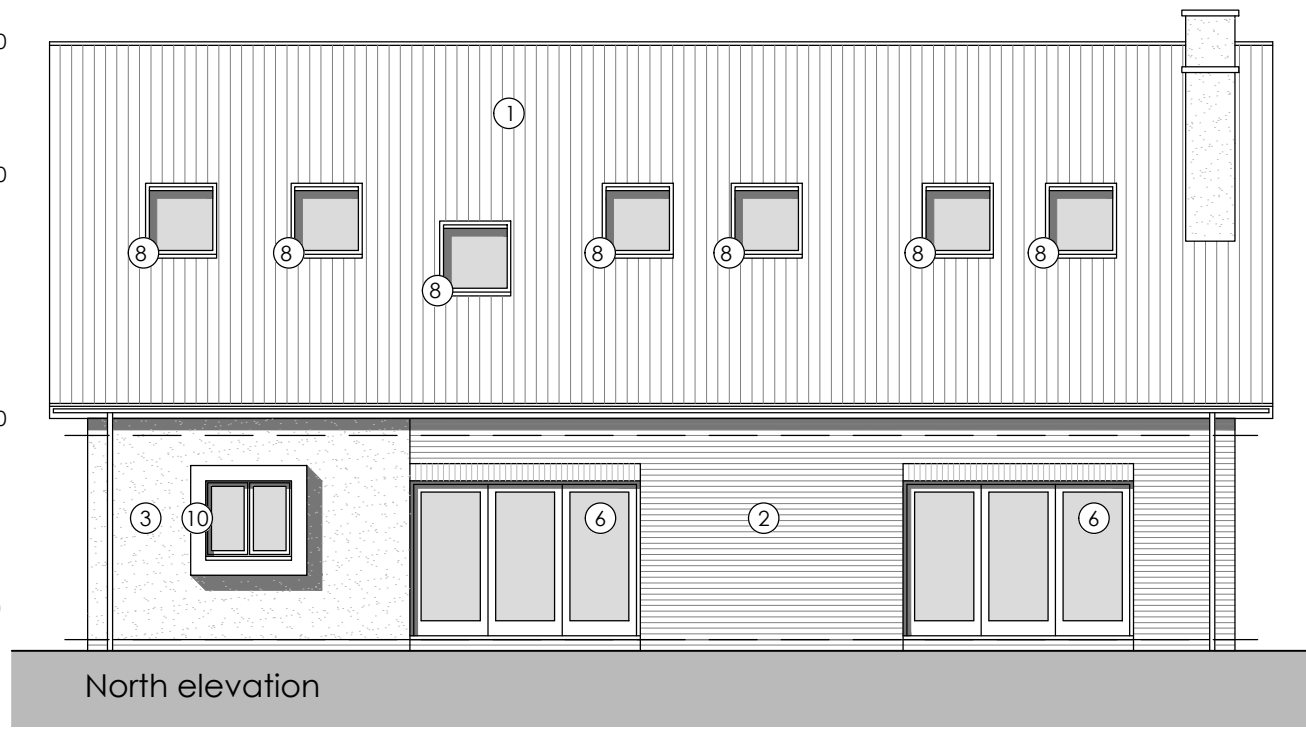


Ground floor plan 3 bed house
121.65m² (1,309.40sqft)
Tot 225.98m² (2,432.39sqft)

- Circulation space/stairs
- Kitchens & bathrooms
- Habitable rooms/bedrooms
- Storage rooms/cupboards



West elevation



North elevation



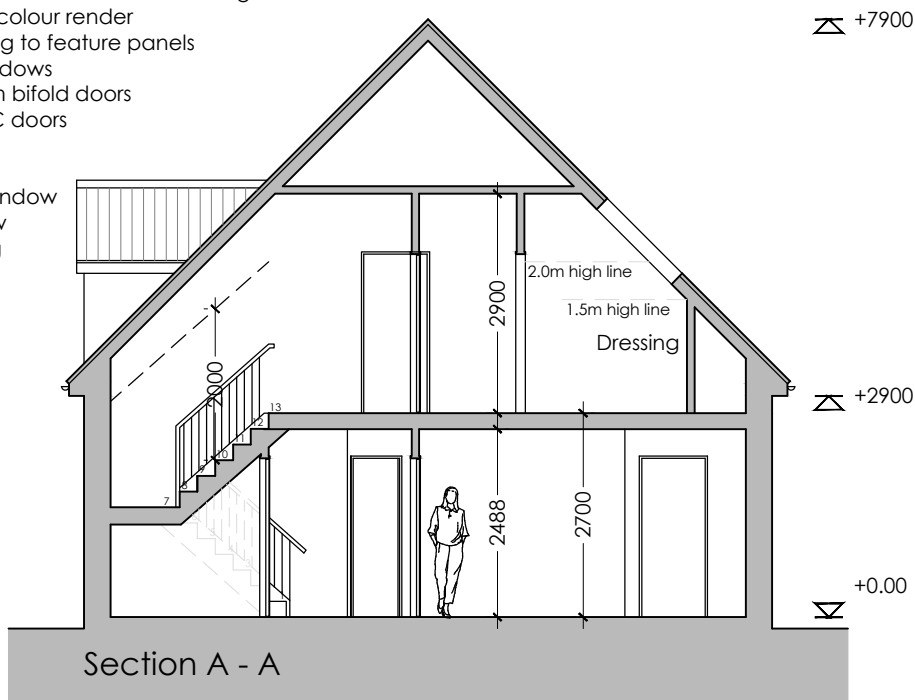
South elevation



East elevation

Materials:

1. Marley Ashmore grey roof tiles
2. Wienerberger Bellbrook multiRed facing brickwork
3. White through colour render
4. Timber boarding to feature panels
5. Grey uPVC windows
6. Grey aluminium bifold doors
7. Coloured uPVC doors
8. Velux windows
9. Garage door
10. Feature oriel window
11. Dormer window
12. Feature glazing



Section A - A

Rev E/26.08.25/Dormers added/MG
Rev D/21.08.25/Dwelling redesigned/MG
Rev C/25.03.25/Materials added/MG
Rev B/18.03.25/Floor plan amended & elevs added/MG
Rev A/07.03.25/Floor plan amended & elevs added/MG

Revision Notes.
Drawing Status.

PLANNING

hssp
architects

Pera Business Park, Nottingham Road
Milton Mowbray, LE13 0PB

Telephone: 01664 563 288 Fax: 01664 563 360
E-Mail: info@hssparchitects.co.uk Web: www.hssparchitects.co.uk

Proposed residential development
at 11 Sapcote Road, Burbage,
Leicestershire, LE10 2AS

Title:
Plot 3 proposed plans & elevs

Scale: 1:100 Drawn: JCB Checked: JCB Date: Feb '25
Drawing No. 9169-03-03 Revision: E

HSSP A1